



HAL
open science

Renal Diseases Associated with Hematologic Malignancies and Thymoma in the Absence of Renal Monoclonal Immunoglobulin Deposits

Antoine Morel, Marie-Sophie Meuleman, Anissa Moktefi, Vincent Audard

► **To cite this version:**

Antoine Morel, Marie-Sophie Meuleman, Anissa Moktefi, Vincent Audard. Renal Diseases Associated with Hematologic Malignancies and Thymoma in the Absence of Renal Monoclonal Immunoglobulin Deposits. *Diagnostics*, 2021, 11 (4), pp.710. 10.3390/diagnostics11040710 . hal-03293724

HAL Id: hal-03293724

<https://hal.u-pec.fr/hal-03293724>



Submitted on 21 Jul 2021

HAL is a multi-disciplinary open access archive for the deposit and dissemination of scientific research documents, whether they are published or not. The documents may come from teaching and research institutions in France or abroad, or from public or private research centers.

L'archive ouverte pluridisciplinaire **HAL**, est destinée au dépôt et à la diffusion de documents scientifiques de niveau recherche, publiés ou non, émanant des établissements d'enseignement et de recherche français ou étrangers, des laboratoires publics ou privés.

Review

Renal Diseases Associated with Hematologic Malignancies and Thymoma in the Absence of Renal Monoclonal Immunoglobulin Deposits

Antoine Morel^{1,2}, Marie-Sophie Meuleman^{1,2}, Anissa Moktefi^{2,3}  and Vincent Audard^{1,2,*} 

- ¹ Assistance Publique des Hôpitaux de Paris (AP-HP), Hôpitaux Universitaires Henri Mondor, Service de Néphrologie et Transplantation, Centre de Référence Maladie Rare “Syndrome Néphrotique Idiopathique”, Fédération Hospitalo-Universitaire “Innovative Therapy for Immune Disorders”, 94000 Créteil, France; antoine.morel@aphp.fr (A.M.); marie.meuleman@aphp.fr (M.-S.M.)
- ² Institut National de la Santé et de la Recherche Médicale (INSERM) U955, Institut Mondor de Recherche Biomédicale (IMRB), Université Paris Est Créteil, Equipe 21, 94000 Créteil, France; anissa.moktefi@aphp.fr
- ³ Département de Pathologie, AP-HP, Hôpitaux Universitaires Henri Mondor, 94000 Créteil, France
- * Correspondence: vincent.audard@aphp.fr; Tel.: +33-(0)1-4981-4446; Fax: +33-(0)1-4981-4452

Abstract: In addition to kidney diseases characterized by the precipitation and deposition of over-produced monoclonal immunoglobulin and kidney damage due to chemotherapy agents, a broad spectrum of renal lesions may be found in patients with hematologic malignancies. Glomerular diseases, in the form of paraneoplastic glomerulopathies and acute kidney injury with various degrees of proteinuria due to specific lymphomatous interstitial and/or glomerular infiltration, are two major renal complications observed in the lymphoid disorder setting. However, other hematologic neoplasms, including chronic lymphocytic leukemia, thymoma, myeloproliferative disorders, Castleman disease and hemophagocytic syndrome, have also been associated with the development of kidney lesions. These renal disorders require prompt recognition by the clinician, due to the need to implement specific treatment, depending on the chemotherapy regimen, to decrease the risk of subsequent chronic kidney disease. In the context of renal disease related to hematologic malignancies, renal biopsy remains crucial for accurate pathological diagnosis, with the aim of optimizing medical care for these patients. In this review, we provide an update on the epidemiology, clinical presentation, pathophysiological processes and diagnostic strategy for kidney diseases associated with hematologic malignancies outside the spectrum of monoclonal gammopathy of renal significance.

Keywords: hematologic malignancies; glomerulonephritis; acute kidney injury; onconeurology



Citation: Morel, A.; Meuleman, M.-S.; Moktefi, A.; Audard, V. Renal Diseases Associated with Hematologic Malignancies and Thymoma in the Absence of Renal Monoclonal Immunoglobulin Deposits. *Diagnostics* **2021**, *11*, 710. <https://doi.org/10.3390/diagnostics11040710>

Academic Editor: Henning Reis

Received: 15 February 2021

Accepted: 13 April 2021

Published: 15 April 2021

Publisher's Note: MDPI stays neutral with regard to jurisdictional claims in published maps and institutional affiliations.



Copyright: © 2021 by the authors. Licensee MDPI, Basel, Switzerland. This article is an open access article distributed under the terms and conditions of the Creative Commons Attribution (CC BY) license (<https://creativecommons.org/licenses/by/4.0/>).

1. Introduction

Onconeurology, covering a broad spectrum of renal manifestations occurring in patients with solid neoplasms or hematologic malignancies, has recently emerged as a subspecialty requiring a multidisciplinary approach and continual interactions between nephrologists and oncologists [1]. In this setting, hematologic malignancies are of particular interest, because almost all renal disorders (e.g., acute renal injury, electrolyte disorders, glomerular involvement) may be observed in patients with lymphoid/myeloid disorders or with plasma cell dyscrasia [2–4]. In addition to the specific and well-known role of monoclonal immunoglobulin deposition as a key factor in kidney lesions in patients with monoclonal gammopathy of renal significance (MGRS) [4] and the recent demonstration of renal toxicity due to the growing use of immune checkpoint inhibitors [5] or anticancer therapies targeting vascular endothelial growth factor (VEGF) [6], clinicians need to be able to recognize other kidney parenchymal lesions occurring in patients with hematologic malignancies, because these lesions may affect prognosis and interfere with optimal management. This review aims to provide an overview of current knowledge about renal manifestations (unrelated to monoclonal immunoglobulin spike or the renal

side effects of chemotherapy) in patients with hematologic malignancies, by focusing on several renal disorders that remain a rare cause of renal injury in these patients. Paraneoplastic glomerulopathies consist of glomerular involvement induced by the production of hormones, cytokines, growth factors and tumor antigens by tumor cells [7]. In this field, the most relevant association is the occurrence of membranous nephropathy (MN) in patients with solid carcinomas [8], but close relationships between minimal change disease (MCD) and Hodgkin lymphoma, non-Hodgkin lymphoma (NHL) and thymoma have also been described [3,8]. Furthermore, some studies have reported a close link between Castleman disease (CD) and thrombotic microangiopathy (TMA) [9,10], myeloproliferative neoplasms and focal and segmental glomerulosclerosis (FSGS) [11,12], hemophagocytic syndrome and collapsing glomerulopathy [13]. All these intriguing associations may shed light on the pathogenesis of the underlying glomerular disorders (Table 1). In addition to paraneoplastic glomerular diseases, the diagnosis of specific tumoral infiltrations into the interstitial and/or glomerular area remains challenging for nephrologists, but such lymphoma infiltrations must be pathologically confirmed rapidly, to prevent delays in specific therapeutic management to reduce the risk of subsequent chronic kidney disease (CKD).

Table 1. Ig deposits non-related glomerular diseases associated with hematologic malignancies reported in the literature.

Hematological Malignancies	Ig Deposits Non-Related Glomerular Diseases Reported in the Literature
Thymoma	MCD, MN, ANCA+ crescentic GN, FSGS, TMA
Castleman	TMA, crescentic GN, MCD, FSGS, AA amyloidosis
TAFRO syndrome	MPGN-like and TMA-like lesion, glomerular endotheliopathy without thrombi
POEMS syndrome	TMA-like lesion, mesangial proliferative GN, endarteritis-like lesion
HPS	FSGS, MCD, TMA, Histiocytosis glomerulopathy
Myelodysplastic syndrome	Mesangial proliferative GN, FSGS, MCD, IR-like GN, TMA, IgAN, MN, C3 glomerulopathy, fibrillary GN
MPN disorders	Mesangial proliferative GN, FSGS, TMA, MPN-related glomerulopathy (specific pattern)
PV	FSGS, mesangial proliferative GN, IgAN, TMA, EMH, AML infiltration, IR-like GN
CML	MCD, MPGN, MN, IgAN, TMA
CMML	IR-like GN, TMA, monocyte (CD61+) infiltration within glomerulus
PMF	FSGS, mesangioproliferative GN, EMH, IR-like GN
ET	FSGS, mesangioproliferative GN, IgAN, TMA
Hodgkin lymphoma	AA amyloidosis, MCD, FSGS, MN, MPGN and anti-GBM or pauci-immune crescentic GN
Non-Hodgkin lymphoma	MPGN, crescentic GN, MCD, FSGS, MN, TMA, mesangial proliferative GN
CLL/SLL/MBL	MPGN, MN, MCD, FSGS, crescentic GN, mesangial proliferative GN, TMA

TAFRO: Thrombopenia, Anasarca, Fever, Reticulin myelofibrosis, and Organomegaly syndrome; POEMS: Polyneuropathy, Organomegaly, Endocrinopathy, Monoclonal protein, Skin changes syndrome; HPS: Hemophagocytic syndrome; MPN: Myeloproliferative neoplasm; CLL: Chronic lymphocytic leukemia; SLL: Small lymphocytic lymphoma; MBL: Monoclonal B lymphocytosis; CMML: Chronic myelomonocytic leukemia; MCD: Minimal change disease; MN: Membranous nephropathy; FSGS: Focal segmental glomerulosclerosis; TMA: Thrombotic microangiopathy; GN: Glomerulonephritis; MPGN: Membrano-proliferative glomerulonephritis; IR-like GN: Infection related-like glomerulonephritis; EMH: Extra-medullary hematopoiesis; IgAN: IgA nephropathy.

2. Epidemiology

Every year in the United States, according to the American Cancer Society, about 1,700,000 new cancer cases are diagnosed, 10% of which correspond to hematologic malignancies [14]. Hodgkin (HL) and non-Hodgkin (NHL) lymphomas together account for about 80,000 cases, whereas chronic lymphoid leukemia (CLL) affects 15,000 patients [14,15]. Hematologic malignancies have long been linked to kidney disease, and the list of associations is continually expanding, but the prevalence of kidney disease in patients with hematologic malignancies has not been accurately determined. A prevalence of 7 to 34% has been reported for renal involvement, but these rates vary considerably with the diagnostic method and threshold for proteinuria used [16,17]. Da'as et al. found various renal manifestations directly or indirectly related to lymphoma proliferation in 83 of 700 (12%) patients with NHL and CLL [18]. Li et al. showed that a broad spectrum of biopsy-proven glomerular diseases, associated with or unrelated to specific lymphomatous infiltration, was present in 18 patients with various types of NHL [19]. Similar results, showing di-

verse glomerular disorders not always directly related to monoclonal immunoglobulin deposition in patients with B-cell lymphoma, were reported by Poitou-Verkinder et al. [20]. The rates and patterns of the associated glomerular lesions vary considerably between underlying hematologic disorders, but some associations seem to be significant, suggesting a close molecular relationship rather than a fortuitous association between the two conditions [3,8]. Strikingly, in both Hodgkin lymphoma (HL) and thymoma, the most frequent associated glomerular disease is MCD [3,21], whereas membranoproliferative glomerulonephritis (MPGN) and MN are the commonest glomerular diseases observed in patients with CLL (36% and 19% of cases of glomerulonephritis, respectively) [22]. Malignant kidney infiltration, classically characterized by bilateral kidney enlargement and acute kidney injury (AKI), is another aspect of renal involvement that can be observed in patients with lymphoproliferative disorders [23]. In a post mortem pathology study of 120 cases with various myeloproliferative and lymphoproliferative disorders, Xiao et al. observed renal involvement in 34% of cases, with a reactive lymphocytic infiltration in 15% [24]. Renal leukemic cell infiltration has been formerly reported in 60% to 90% of cases in autopsy studies of patients with CCL and unimpaired renal function [22]. However, such infiltration remains a common finding in CCL patients (67% of cases) with biopsy-proven renal involvement (AKI or nephrotic syndrome) [20]. Regardless of the underlying B-cell lymphoproliferative disorder, malignant infiltration may be observed as the principal pathological lesion in the kidney and may be associated with some degree of glomerular damage [25]. Hematologic malignancies caused by the clonal proliferation of myeloid cells, or “myeloproliferative neoplasms” (MPNs), include chronic myelogenous leukemia (CML), polycythemia vera (PV), essential thrombocythemia (ET) and primary myelofibrosis (PMF). These conditions are less frequently associated with specific renal involvement, but some glomerular damage has been reported [11,12,26]. Secondary hemophagocytic syndrome (HPS) may occur in various hematologic malignancies, with potential effects on all kidney structures, but via different mechanisms. In these patients, acute tubular necrosis (ATN) is the most relevant renal manifestation, but a renal biopsy should be discussed in cases of suspected HPS-associated glomerulopathy [13,27]. Renal complications seem to be frequent (54%) [28,29] in patients with CD, in whom small-vessel involvement characterized by endotheliosis seems to be the most prominent lesion [9]. The main glomerular lesions occurring in association with hematological malignancies are summarized in Figure 1.

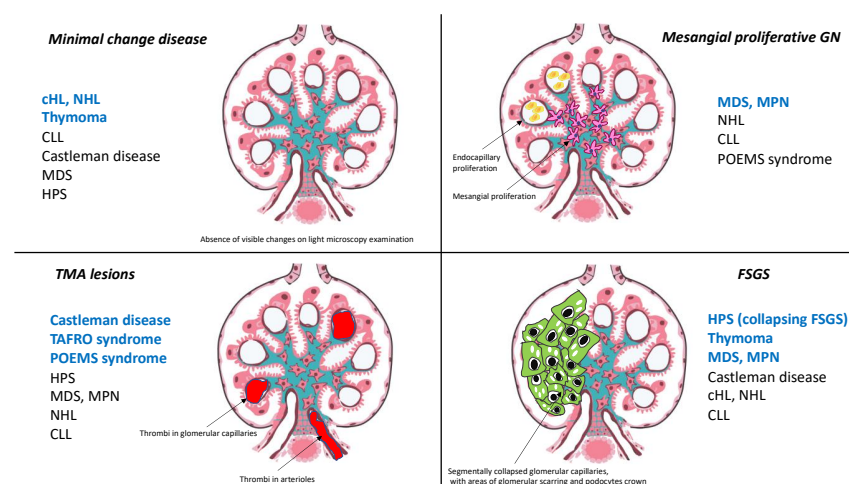


Figure 1. Main glomerular disorders (MCD, TMA, mesangial proliferative GN and FSGS) occurring in association with hematological malignancies and thymoma. The most relevant associations are highlighted in blue in the Figure. cHL: Classical Hodgkin lymphoma; CLL: Chronic lymphocytic leukemia; FSGS: Focal and segmental glomerulosclerosis; HPS: Hemophagocytic syndrome; MDS: Myelodysplastic syndrome; MPN: Myeloproliferative neoplasms; NHL: Non-Hodgkin lymphoma; POEMS: Polyneuropathy, Organomegaly, Endocrinopathy, Monoclonal protein, Skin changes syndrome; TAFRO: Thrombopenia, Anasarca, Fever, Reticulin myelofibrosis, and Organomegaly syndrome.

3. Hodgkin Lymphoma and Glomerular Disease: The Singular Case of Minimal Change Disease

Classical Hodgkin lymphoma (cHL) is a hematologic disorder characterized by the uncontrolled proliferation of malignant cells known as “Hodgkin and Reed–Sternberg (HRS)” cells. These cells, which are derived from germinal center or post-germinal center B cells, have lost their B-cell phenotype and instead present a highly unusual pattern of expression of many markers from other hematopoietic cell lineages [30]. Many types of glomerulonephritis are recognized as associated with cHL, but the incidence of nephrotic syndrome is low and estimated at about 0.5 to 1% [3]. In two previous studies of 1700 patients with Hodgkin disease, two glomerulopathies were significantly associated with cHL: amyloidosis (0.1% of cases) and MCD (0.4% of cases) [31,32]. The association between cHL and MCD is probably one of the best known among hematologic disorder-related paraneoplastic glomerulopathies [33]. AA amyloidosis has decreased in frequency with current therapeutic strategies, but other glomerular lesions, including FSGS, MN, MPGN and anti-glomerular basement membrane (anti-GBM) or pauci-immune crescentic glomerulonephritis lesions, may also be observed in patients with cHL [2,33,34]. Audard et al. reported the main clinical, biological, pathological and therapeutic characteristics of 21 patients (14 men, mean age of 28.5 years at the time of renal biopsy) with MCD occurring in a context of cHL [34]. Before this study, in the largest reported meta-analysis to date, Eagen et al. reported the simultaneous occurrence of cHL and MCD in 12 of 26 patients [33]. By contrast, Audard et al. reported a median time of 15 months between the diagnosis of MCD and that of cHL (range: 0–156 months) [34]. Nevertheless, in patients suffering from cHL and MCD, the two diseases often appear to follow a remarkably similar course. Indeed, MCD remission occurs after the successful treatment of cHL, regardless of the therapeutic strategy used, suggesting that this glomerular disease is a paraneoplastic disorder when it occurs in the context of cHL [34]. Consistent with this hypothesis, in five patients with steroid- and/or cyclosporine-resistant MCD, the diagnosis and effective treatment of cHL were associated with a complete remission of nephrotic syndrome [34]. These findings were confirmed by Aggarwal et al., who demonstrated that serum permeability activity can be normalized by the use of high-dose chemotherapy to treat cHL [35]. No particular subgroup of patients with cHL, in terms of age, sex, or disease stage, seems to be at a greater risk of developing MCD. Strikingly, in the study of Audard et al. 71% of patients with MCD occurring in association with cHL developed systemic symptoms while 90% of them developed inflammatory syndrome [34]. These findings seem to be quite higher than in patients with cHL without MCD. It has been suggested that MCD is more frequently associated with cHL of a mixed-cellularity histological subtype [36]. However, Audard et al. found that the nodular sclerosing subtype predominated (71.4%) [34]. The pathogenesis of this association remains poorly understood, and the underlying molecular mechanisms are unknown. There is compelling evidence, including clinical and experimental observations, to suggest that both the immune system and podocyte dysfunction are involved in MCD pathogenesis [37]. Several hypotheses have been put forward to explain this intriguing association. Cytokines, such as interleukin-13 (IL-13), secreted by the HRS cells, play an important role in cHL pathogenesis, by stimulating the growth of HRS cells through both autocrine and paracrine effects [38,39]. Interestingly, the IL-13 receptor is expressed in glomeruli from MCD patients, and IL-13 stimulates transcellular ion transport in cultured podocytes [40]. IL-13 does not affect cellular permeability to macromolecules *in vitro* [40], but transgenic rats overexpressing IL-13 develop proteinuria and MCD-like lesions [41]. Moreover, Nakayama et al. found that tumor necrosis factor- α (TNF- α), was overproduced in patients with relapsing cHL-related MCD, whereas proteinuria decreased simultaneously with TNF- α level normalization after effective chemotherapy [42]. Nevertheless, the role of TNF- α as a potential trigger of proteinuria in patients with primary MCD has not been clearly demonstrated [43]. Audard et al. showed that the c-maf-inducing protein (c-mip) is selectively induced in both podocytes and HRS cells from patients presenting this association, but not in lymphomatous tissue from cHL patients without MCD, suggesting

that the overexpression of c-mip in these cells may represent a molecular signature of the association (Figure 2) [44].

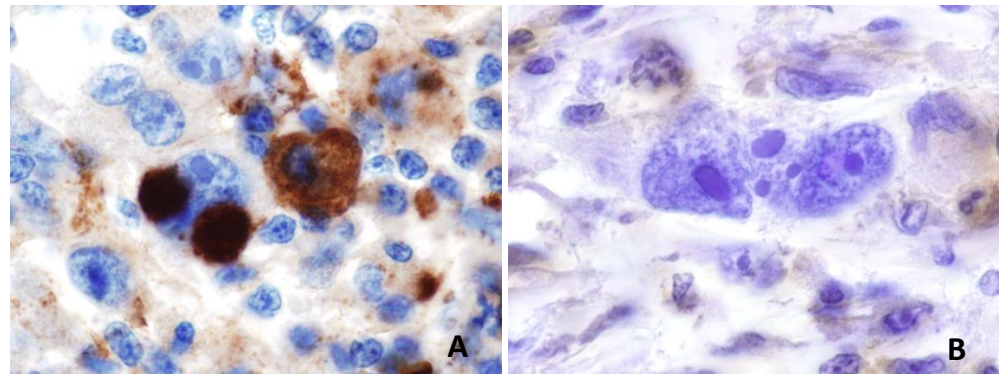


Figure 2. C-mip is selectively induced in HRS cells from patients with MCD occurring in association with cHL (A), whereas no expression is found on lymph node tissues from patients with cHL not associated with MCD (B).

4. Glomerular Diseases Associated with Non-Hodgkin Lymphoma

Many types of glomerular disease have been described in patients with NHL. In the study by Li et al. including a broad spectrum of lymphoproliferative disorders, renal pathology findings showed MPGN lesions to be the most frequent type of glomerular lesion, occurring in 35% of cases [19]. Crescentic glomerulonephritis was present in 20% and MCD in 17% of cases [19]. Due to the different pathophysiological processes underlying these glomerular lesions and the many subtypes of NHL, no clear direct molecular link between NHL and these glomerular lesions has ever been demonstrated. By focusing on specific cases of MCD occurring in patients with NHL, Kofman et al. identified 18 patients (10 men, mean age at the time of renal biopsy 62.5 years) among 13,992 cases of NHL displaying this association. A marginal B-cell lymphoma or CLL was found in 50% of these patients, whereas Waldenström macroglobulinemia (WM) was found in 33.3% [45].

CLL is characterized by the clonal proliferation of mature lymphocytes with a particular phenotypic signature of CD5-positive B cells circulating within lymphoid organs, such as the spleen, lymph nodes and bone marrow [46]. Several glomerular diseases have been reported in association with CLL [18,22,47–49]. Since the first description of nephrotic syndrome in a patient with CLL, the prevalence of nephrotic syndrome has been estimated to be below 1% [50]. Moulin et al. found that MPGN was the most frequent (69%) histological lesion, followed by crescent glomerulonephritis (8%), FSGS (8%) and mesangial hypertrophy (8%) [48]. A recent extensive literature review revealed that MPGN and MN were the most frequent underlying glomerular diseases in 36% and 19% of these patients, respectively [22]. In the study by Strati et al. of 4024 patients with CCL or monoclonal B-cell lymphocytosis, a renal biopsy was performed in 49 patients (1.2%) [47]. This biopsy revealed the presence of MPGN in 10 cases and MCD in five cases. For patients with CCL-related MPGN, glomerular damage frequently seems to be mediated by monoclonal immunoglobulin deposition, particularly in cases of cryoglobulin-related MPGN [20]. MCD observed in these patients may result from a dysfunction of both B and T cells. Nevertheless, leukemic status does not appear to be essential for the development of MCD, which has already been described in monoclonal B lymphocytosis, a pre-CLL state [51]. The molecular mechanisms underlying the pathogenesis of CLL-related MN remain unknown, but one French study reported an absence of anti-PLA2R antibodies in four patients with this association [52].

Renal involvement has been extensively studied in patients with WM, a lymphoproliferative disorder characterized by the presence of a monoclonal IgM protein associated with a lymphoplasmacytic infiltrate of more than 10% on bone marrow biopsy [53–57]. Over a 10-year study period, Higgins et al. analyzed renal pathological findings of 57 pa-

tients. They observed non-monoclonal gammopathy-related kidney lesions in 18% of cases (two patients with FSGS, two patients with MCD and one patient with thrombotic microangiopathy (TMA), other renal lesions in five cases) [56]. Similar findings were reported by Vos et al., who found a cumulative incidence of about 5% for WM-related nephropathy (44 cases in 1391 patients studied over a period of 15 years) [57]. The renal lesions consisted of various types of monoclonal IgM-related nephropathy lesions (AL amyloidosis in 25%, other monoclonal IgM-deposition disease/cryoglobulinemia in 23%, cast nephropathy in 9%, light chain deposition disease in 9%), with or without an associated lymphoplasmacytic infiltration (18%). Other types of glomerular lesions appeared to be less frequent (TMA in 7%, MCD in 5% and MN in 2%) [57].

5. Lymphomatous Infiltration of Renal Parenchyma

Previous post mortem pathology studies have shown that asymptomatic renal involvement due to lymphomatous parenchymal infiltration by tumoral lymphoid cells is a common finding in patients with advanced lymphoma [22,58–60]. Conversely, renal biopsy-proven lymphomatous infiltration appears to be less common in patients with evident renal dysfunction. In a cohort of 700 patients with NHL or CLL, specific tumoral infiltration was found in only five patients with acute renal failure [18]. In their literature review, Uprety et al. found 17 cases of tumoral infiltration in CLL patients, with no clear relationship between absolute lymphocyte count and the risk of developing renal tumoral infiltration (Figure 3) [59].

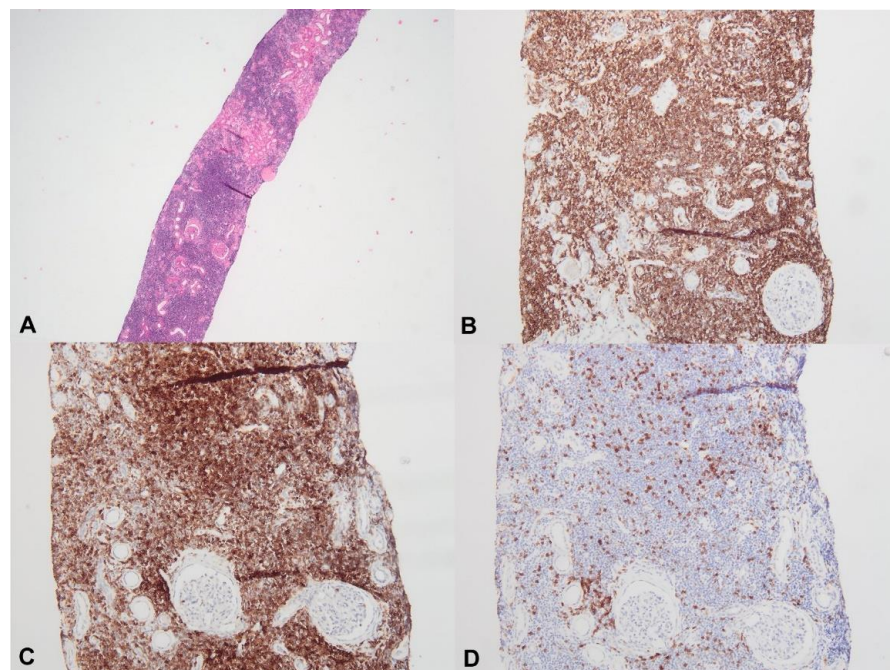


Figure 3. Diffuse interstitial infiltration by chronic lymphoid leukemia cells (A), hematein eosin saffron $\times 20$) positive for CD20 ((B), $\times 100$) and CD5 ((C), $\times 200$), whereas immunohistochemistry with anti-CD3 antibody is negative on tumoral cells (D), $\times 200$).

Lymphoplasmacytic lymphoma infiltration seems to be more frequently recognized in patients with WM (3/14 in the study by Audard et al. [54], 18/35 in the study by Chauvet et al. [55], 6/57 in the study by Higgins et al. [56] and 8/44 in the study by Vos et al. [57]). Törnroth et al. reviewed 55 cases of biopsy-proven renal lymphoma and demonstrated that clinical presentation differed according to the site of the tumoral infiltrate [61]. In this study, AKI was found in 87% of cases in which a predominant involvement of the interstitial area was diagnosed, whereas it was present in 45% of cases in which predominant intraglomerular localization was found. Bilateral kidney

enlargement was more evident in patients with interstitial infiltration but was not observed in patients with intraglomerular lymphoma. The definitive pathological diagnosis of malignant cell infiltration may require extensive immunohistochemistry analysis (Figure 4) to distinguish between specific tumoral and interstitial reactive infiltrates, as previously described for patients with cHL or NHL-related MCD [34,45].

Two recent French cohorts including 52 [25] and 34 [60] patients with biopsy-proven malignant B-cell infiltration in the kidney have helped to characterize this renal entity. The hematological diagnosis of a B-cell lymphoproliferative disorder consisting of WM (21/52 and 12/34), CLL (11/52 and 10/34), another low-grade lymphoma (11/52, and 6/34), or diffuse large B-cell lymphoma (8/52 and 6/34) preceded renal manifestations in 29% [25] and 62% [60] of cases. Javaugue et al. reported that AKI and nephrotic syndrome were present at the time of renal biopsy in 56% and 35% of cases, respectively [25]. Corlu et al. noted renal impairment in 85.3% of cases (AKI in 60% of cases) [60]. Consistent with the findings of Törnroth et al. [61], the principal pattern of tumoral infiltration in these two studies was tubulo-interstitial injury (51/52 and in 33/34 cases, respectively) [25,60]. After the initiation of chemotherapy, a renal response was observed in 48% and 27.6% of patients [25,60]. In multivariate analysis, associated immunoglobulin-related nephropathy was found to be the only independent predictor of poor renal outcome [25]. In both studies, tumoral infiltration of the renal parenchyma was associated with poor prognosis (38% and 35.3% of the patients died, after a median follow-up of 21 and 29 months, respectively) [25,60]. Specific renal infiltration by tumoral lymphoid cells seems to be a very rare finding, but has been anecdotally reported during the course of cHL [58] and multiple myeloma (Figure 5) [62].

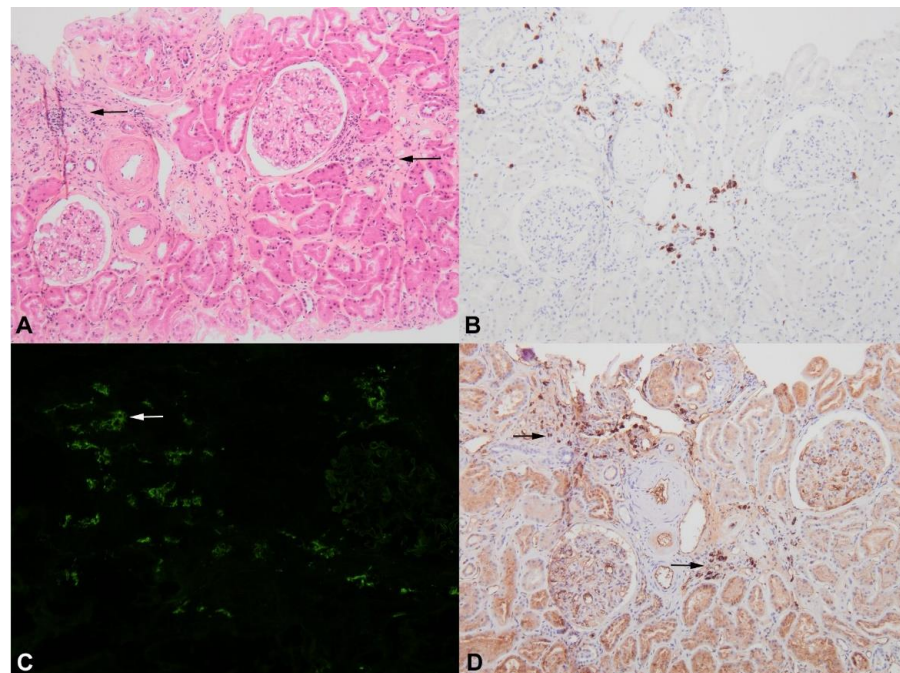


Figure 4. Minimal interstitial infiltration (arrows) by few tumoral lymphocytes and plasma cells ((A), hematein eosin saffron $\times 100$), displaying CD79a positivity ((B), $\times 100$) and monotypic staining for IgM ((C), $\times 100$, arrow) and lambda light chain ((D), $\times 100$, arrows).

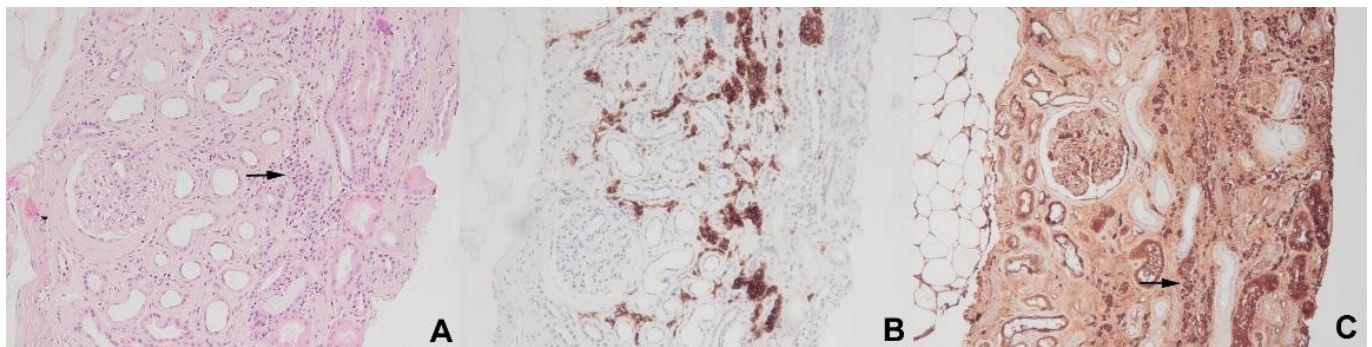


Figure 5. Monotypic plasma cell interstitial nephritis in a patient with multiple myeloma. Numerous interstitial plasma cells ((A), hematein eosin saffron $\times 100$, arrow) with strong staining for CD38 ((B), $\times 100$) and monotypic staining for kappa light chain ((C) $\times 100$, arrow).

6. Glomerulopathies Related to Myeloproliferative Neoplasms and Myelodysplastic Syndromes

MPN is a group of clonal hematopoietic stem cell disorders characterized by aberrant proliferation of at least one of the precursors of the myeloid, erythroid, granulocytic and megakaryocytic lineages [63]. The main genetic driver mutations associated with these disorders are mutations of the genes encoding Janus kinase 2 (JAK2), or calreticulin (CALR), the Bcr-abl mutation, which is closely associated with CML, and by a truncated form of the thrombopoietin receptor gene [63]. In a cohort of 143 patients with Bcr-Abl-negative MPN, 29% had a CKD stage ≥ 3 at the time of hematologic diagnosis, and 20% had a rapid annual loss of eGFR (>3 mL/min/1.73m²) [64]. Renal manifestations of MPN driven by hyperuricemia [65] and the increase in the risk of renal vessel thrombosis [66,67] in these patients are well known, but specific renal involvement remains a rare finding. The first relevant study regarding glomerular involvement in a context of MPN concerned a cohort of 138 patients, five of whom (3.6%) (two patients with PV, two with ET and one with PMF) had undergone kidney biopsy for the exploration of renal impairment associated with proteinuria of 0.5 to 5.4 g/day [11]. Histological findings led to the identification of FSGS lesions in three cases, associated with diffuse mesangial sclerosis in two cases [11]. In 2011, Said et al. revisited the spectrum of these glomerular diseases and proposed the term of “MPN-related glomerulopathy”, based on a review of the renal biopsy specimens of 11 patients (8 with PMF, and 1 each with CML, PV, and ET) with this association [26]. The authors defined a specific pattern of glomerular damage associated with MPN, characterized by mesangial hypercellularity and sclerosis, which were present in all patients, associated with some degree of segmental sclerosis (73%), features of chronic TMA (82%) and intracapillary hematopoietic stem cell infiltration (36% of cases) without the detection of immune-complex deposits on immunofluorescence or ultrastructural analysis [26]. Interestingly, renal involvement occurred late in the course of MPN (a median of 7.2 years after hematologic disease diagnosis) and all patients had significant proteinuria (median proteinuria of 6.8 g/day). Büttner-Herold et al. recently confirmed these pathological findings by investigating kidney biopsy specimens from 29 patients (23 men, mean age 67 years) with various types of MPN or Myelodysplastic syndrome (MDS) [12]. In this study, the most prominent glomerular lesion included features of both chronic TMA (71%) and acute TMA, with acute endothelial injury (68%), intracapillary platelet aggregation (62%), and mesangiolytic (21%), whereas extramedullary hematopoiesis (EMH) was found in 17% of biopsy specimens [12]. Büttner-Herold et al. found podocytopathy lesions (e.g., foot process effacement $>75\%$) in 8/25 kidney biopsy specimens analyzed by electron microscopy, and 66% of kidney biopsies had features typical of FSGS lesions [12]. However, the existence of a molecular link between these conditions remains to be clarified. High levels of transforming growth factor- β (TGF- β) and VEGF have been found in patients with primary myelofibrosis [68], and these molecules seem to be involved in

progression of the hematologic disease [69,70]. Interestingly, TGF- β induces podocyte apoptosis and depletion in both transgenic mice and cultured podocytes, leading to progressive glomerulosclerosis [71]. Belliere et al. described the spectrum of kidney disorders observed in patients with chronic myelomonocytic leukemia (CMML) or Bcr-Abl-negative MPN, by analyzing the various histological patterns in 14 patients: the principal renal lesions consisted of pauci-immune glomerulonephritis ($n = 5$), EMH ($n = 6$), tubular atrophy and interstitial fibrosis with polymorphic inflammation ($n = 8$), IgA nephropathy ($n = 2$) and AA amyloidosis ($n = 1$). Interestingly, immunostaining for CD61 confirmed the occurrence of megakaryocyte infiltration in the glomeruli or interstitium in 5/8 patients, and massive CMML infiltration in the kidney was identified in one case [72]. Another form of renal disease, “renal EMH”, seems to occur in patients with MPN, particularly in those with PMF [73]. In a report of 14 patients (9 men, mean age 68 years) with kidney biopsy-proven EMH, the histological lesions observed consisted of an interstitial infiltrate ($n = 12$) and/or perirenal infiltrate ($n = 3$) and/or mass-like lesions ($n = 1$), but concomitant glomerular lesions were found in all patients. This singular renal entity is characterized by renal impairment in 36% of cases, proteinuria with nephrotic syndrome in 64% of cases, and its definitive diagnosis requires immunohistochemical staining to detect myeloid precursors (myeloperoxidase stain) and megakaryocyte markers (CD61) [73].

MDS is a clonal hematopoietic stem cell disorder characterized by ineffective hematopoiesis, leading to peripheral cytopenia, an increase in the risk of developing autoimmune disease and a tendency toward leukemic transformation in up to 30% of cases [74]. In a cohort of 125 patients with MDS, three patients (2.4%) presented typical features of nephrotic syndrome [75]. A broad spectrum of glomerular diseases, such as mesangial proliferative glomerulonephritis, immunoglobulin-associated MPGN type 1, IgA nephropathy, IgA vasculitis, crescentic C3 glomerulopathy, fibrillary glomerulonephritis, FSGS, MCD, and MN, has been described in association with MDS [75–79]. As the pathophysiological mechanisms underlying these glomerular lesions are different, these findings raise questions about whether there is a clear relationship between the two conditions. In a recent study, Schwotzer et al. retrospectively identified 19 patients with MDS (median age, 74 years, 14 men) who had undergone renal biopsy to explore renal impairment (AKI in 16 cases, median proteinuria 120 mg/mmol) [79]. MDS was diagnosed before renal biopsy in 13 cases and extrarenal manifestations were observed in 58% of cases. Strikingly, the main pathological feature in the kidney was acute tubulointerstitial nephritis, which was present in 37% of cases; immune-related glomerular diseases were found in other patients, suggesting that the kidney may be a target of autoimmunity in MDS patients [79].

7. Castleman Disease and POEMS-Related Renal Diseases

Castleman disease (CD) is a group of lymphoproliferative disorders characterized by angiofollicular lymph node hyperplasia, with two clinical presentations (unicentric/focal and diffuse/multicentric) and three histological variants (hyaline-vascular, plasma-cell and mixed) [80]. Studies of patients with CD have reported prevalence of renal involvement ranging from 25% to 54% [10,28]. El Karoui et al. identified 19 patients (median age, 41.5 years, 10 women) with CD (multicentric in 89% of cases, and with a plasma-cell or mixed variant in 84% of cases) who underwent renal biopsy for the assessment of renal dysfunction and/or significant proteinuria (range: 0.25 to 15 g/day) [9]. In patients without HIV infection ($n = 15$), the most frequent renal histological features were small-vessel lesions (SVLs) with endotheliosis, mesangiolytic, double contours of GBM or arteriolar/glomerular thrombi (in 60% of cases). Other lesions included AA amyloidosis (20%), tubulointerstitial disease (15%), and FSGS lesions in the last patient. The authors found that SVLs were associated with lower levels of VEGF expression on glomeruli. By reviewing 75 published cases of CD (multicentric in 49 cases and unicentric in 26 patients) with biopsy-proven renal involvement, Yuan et al. found that nephrotic syndrome and AKI were present in 28% and 12% of cases, respectively [81]. In this study, the two most frequent underlying renal diseases were amyloidosis and TMA (35% and 17%, respectively). In a

third study focusing on 76 patients with CD, renal involvement was found in 25% of cases and was associated with a multicentric clinical subtype and the plasma cell histological variant [10]. Renal biopsy, which was performed in 11 of these 19 patients, demonstrated TMA lesions (55%), crescentic glomerulonephritis (18%), and MCD and chronic tubule-interstitial nephritis in the last two patients. Chemotherapy was associated with renal recovery in 75% of patients with AKI [10]. The spectrum of renal manifestations of thrombocytopenia (T), anasarca (A), fever (F), reticulatin (R) myelofibrosis, and organomegaly (O) (TAFRO) syndrome, a severe variant of idiopathic multicentric CD [82], remains poorly described, even though renal dysfunction seems to be a common finding in these patients. An extensive literature review by Nagayama et al. provided a description of kidney biopsy findings for 11 patients (8 women, 3 men, aged from 48 to 84 years) with TAFRO syndrome [83]. All patients had low albumin levels, with various degrees of proteinuria (0.3 to 3.2 g/day), and two main patterns of renal lesions were identified: MPGN-like lesions in five cases and TMA-like lesions in six cases. Furthermore, Mizuno et al. recently reported the clinical and histological characteristics of seven patients with TAFRO syndrome and renal involvement [84]. Clinical features included anasarca (100%), AKI (100%), and low albumin levels (87%), contrasting with a urinary protein excretion rate of <1 g/day in 86% of patients. Glomerular endotheliopathy was a renal pathological hallmark in all cases. The polyneuropathy (P), organomegaly (O), endocrinopathy (E), monoclonal protein (M) and skin changes (S) (POEMS) syndrome is a clinical/pathological entity that may occur on its own or in association with CD [85]. Although not included in the diagnostic criteria, renal damage is commonly observed in patients with POEMS syndrome [28]. AKI often occurs, due to relative hypovolemia resulting from the vascular hyperpermeability that is a hallmark of this disease [86,87]. Nakamoto et al. summarized the main renal manifestations of 52 patients (29 men and 23 women) with POEMS and renal involvement [88]. Proteinuria was absent in 18.4% and below 1 g/day in 77.4%. Renal biopsy specimens, which were available in 22 cases, disclosed two major pathological changes: glomerular alterations characterized by glomerular enlargement, cell proliferation, mesangiolysis, marked swelling of both endothelial and mesangial cells, and endarteritis-like lesions of renal small arteries (Figure 6) [88]. Other rarer renal lesions due to monoclonal immunoglobulin deposition, such as immunotactoid glomerulopathy [89] and light chain deposition disease [90], have also been reported.

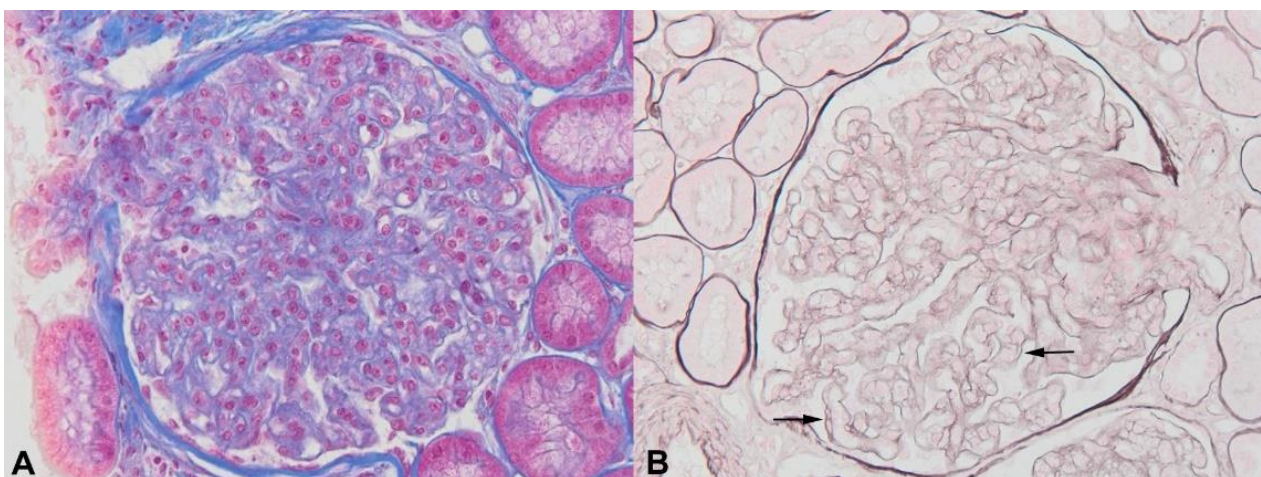


Figure 6. Thrombotic microangiopathy associated with POEMS syndrome. Glomerular enlargement with mesangium loosening, endothelial cell swelling ((A), Masson trichrome staining $\times 400$) and double contours ((B), Jones methenamine silver, $\times 400$, arrows).

8. Renal Lesions Occurring in Patients with Hemophagocytic Syndrome

Hemophagocytic syndrome (HPS), also known as macrophagic activation syndrome or hemophagocytic lymphohistiocytosis, is a life-threatening medical condition characterized by multiple organ failure, fever and cytopenia due to the infiltration into the bone marrow and organs of excessive numbers of activated macrophages secondary to inherited disorders, viral, bacterial or fungal infections, autoimmune diseases, solid tumors or lymphoproliferative disorders [91]. AKI due to ATN is frequently observed in HPS patients [13] and is considered to be associated with a poor prognosis [92]. Post mortem studies have revealed that ATN associated with various degrees of interstitial inflammation is observed in up to 45% of patients [13]. In addition to tubular and interstitial injury, glomerular damage may be observed, but is probably underestimated because the poor general condition of some patients may rule out the performance of a renal biopsy. Thaunat et al. performed a retrospective study of a French cohort of nine patients with HPS-associated nephrotic syndrome (together with two additional published cases) [27]. All patients (5 men and 6 women, of African ancestry in 63.6% of cases) had undergone renal biopsy to explore nephrotic syndrome (mean albumin concentration of 17 g/L and a mean proteinuria of 11 g/day). HPS was due to a secondary process in 10/11 patients (T-cell lymphoma (40%), CMV disease (10%), leishmaniasis (10%), B-cell lymphoma (10%) or HL (10%)). NS occurred at the time of HPS diagnosis in 63.6%, or during the course of HPS in 27.4%, (25 ± 30 days after HPS diagnosis). AKI was associated with nephrotic syndrome in 10 patients and required renal replacement therapy in six cases. Death occurred in 64% of cases. The underlying glomerular lesions consisted of MCD in four patients, TMA associated with podocyte injury in two cases and collapsing glomerulopathy (a variant of FSGS) in five cases, but tubulointerstitial damage (interstitial infiltrate, ATN and microcystic tubular dilation) was found in all patients with AKI. The pathophysiological processes involved in HPS-related glomerular disease remain uncertain. In the survey performed by Thaunat et al., 6/11 patients had malignant lymphoid disorders that have been associated with the occurrence of MCD and FSGS (see above). A significant increase in the levels of proinflammatory cytokines (such as TNF- α) was observed in three of the cases studied by Thaunat et al. [27]. Unfortunately, in this cohort, including 63.6% Afro-Caribbean individuals, APOL1 risk alleles, a recently identified major risk factor associated with the occurrence of collapsing glomerulopathy, were not investigated [93,94]. Another glomerular disease has been described as a specific pattern of HPS, defined as “histiocytosis glomerulopathy”. Histological analyses revealed massive and diffuse glomerular CD68⁺ macrophage infiltration associated with intraglomerular hemophagocytosis [95,96].

9. Acquired Thymic Disease-Associated Nephropathy

Acquired thymic diseases (thymic hyperplasia or thymoma) are associated with a broad spectrum of autoimmune disorders, including myasthenia gravis, which is found in 15 to 20% of cases, but also autoimmune erythroblastopenia, systemic lupus erythematosus, and thyroid disorders [97,98]. The prevalence of renal involvement seems to be low (<1%) but such involvement is probably underdiagnosed, as the occurrence of renal disease is rarely reported in retrospective surgical series [21,99]. MCD is the commonest paraneoplastic glomerular disease occurring in patients with thymoma, but other glomerular lesions have also been reported [3]. Karras et al. retrospectively investigated the characteristics of 21 patients (8 men, 13 women, mean age 49 years) with kidney biopsy-proven acquired thymic disease-related glomerulopathy [99]. The thymic disease in these patients was mostly malignant thymoma, which was found in 17/19 patients. Renal disease occurred after the diagnosis of thymic disease (108 ± 83 months) in half the patients and 71% of patients presented a paraneoplastic manifestation other than kidney disease. Renal pathology studies identified MCD in 14/21 patients, MN in 4/21, anti-neutrophil cytoplasm antibody (ANCA)-related crescentic glomerulonephritis in 2/21. Thymoma-related MCD and FSGS were steroid-sensitive in 84% of cases, and prognosis was strongly related to thymoma disease outcome (38% of cases died during follow-up). The high prevalence of MCD in the

setting of acquired thymic disease supports the hypothesis of a molecular link between these two medical conditions, probably related to a dysregulation of T-cell functions (see above, in the section “Hodgkin lymphoma and glomerular disease: the singular case of MCD”). In this setting, the Buffalo/Mna rat experimental model, which spontaneously develops MCD/FSGS lesions in association with myasthenia gravis-like disease and thymoma, is likely to be particularly useful for elucidating some of the molecular mechanisms involved in this intriguing association [100,101].

10. Conclusions

Hematologic malignancy-related kidney manifestations are infrequent, but their prompt recognition by clinicians is essential because appropriate diagnosis appears to be the key to improving overall prognosis. Paraneoplastic glomerulopathies and specific interstitial lymphomatous infiltration are two specific lesions associated with hematologic neoplasms that can be readily recognized through appropriate screening for renal function and proteinuria, leading to a kidney biopsy, which remains the cornerstone of patient management.

Funding: This research received no external funding.

Conflicts of Interest: Dr. Audard received consulting fees from Addmedica outside of the submitted work. All other authors have declared that no conflict of interest exists.

References

- Rosner, M.H.; Jhaveri, K.D.; McMahon, B.A.; Perazella, M.A. Onconephrology: The intersections between the kidney and cancer. *CA Cancer J. Clin.* **2021**, *71*, 47–77. [CrossRef] [PubMed]
- Luciano, R.L.; Brewster, U.C. Kidney involvement in leukemia and lymphoma. *Adv. Chronic Kidney Dis.* **2014**, *21*, 27–35. [CrossRef] [PubMed]
- Lien, Y.-H.H.; Lai, L.-W. Pathogenesis, diagnosis and management of paraneoplastic glomerulonephritis. *Nat. Rev. Nephrol.* **2011**, *7*, 85–95. [CrossRef] [PubMed]
- Leung, N.; Bridoux, F.; Batuman, V.; Chaidos, A.; Cockwell, P.; D’Agati, V.D.; Dispenzieri, A.; Fervenza, F.C.; Fervand, J.-P.; Gibbs, S.; et al. The evaluation of monoclonal gammopathy of renal significance: A consensus report of the International Kidney and Monoclonal Gammopathy Research Group. *Nat. Rev. Nephrol.* **2019**, *15*, 45–59. [CrossRef] [PubMed]
- Shingarev, R.; Glezerman, I.G. Kidney complications of immune checkpoint inhibitors: A review. *Am. J. Kidney Dis.* **2019**, *74*, 529–537. [CrossRef] [PubMed]
- Estrada, C.C.; Maldonado, A.; Mallipattu, S.K. Therapeutic inhibition of VEGF signaling and associated nephrotoxicities. *J. Am. Soc. Nephrol.* **2019**, *30*, 187–200. [CrossRef] [PubMed]
- Ronco, P.M. Paraneoplastic glomerulopathies: New insights into an old entity. *Kidney Int.* **1999**, *56*, 355–377. [CrossRef] [PubMed]
- Cambier, J.-F.; Ronco, P. Onco-nephrology: Glomerular diseases with cancer. *Clin. J. Am. Soc. Nephrol.* **2012**, *7*, 1701–1712. [CrossRef]
- El Karoui, K.; Vuiblet, V.; Dion, D.; Izzedine, H.; Guitard, J.; Frimat, L.; Delahousse, M.; Remy, P.; Boffa, J.-J.; Pillebout, E.; et al. Renal involvement in Castleman disease. *Nephrol. Dial. Transplant.* **2011**, *26*, 599–609. [CrossRef]
- Xu, D.; Lv, J.; Dong, Y.; Wang, S.; Su, T.; Zhou, F.; Zou, W.; Zhao, M.; Zhang, H. Renal involvement in a large cohort of Chinese patients with Castleman disease. *Nephrol. Dial. Transplant.* **2011**, *27*, iii119–iii125. [CrossRef]
- Au, W.Y.; Chan, K.W.; Lui, S.L.; Lam, C.C.; Kwong, Y.L. Focal segmental glomerulosclerosis and mesangial sclerosis associated with myeloproliferative disorders. *Am. J. Kidney Dis.* **1999**, *34*, 889–893. [CrossRef]
- Büttner-Herold, M.; Sticht, C.; Wiech, T.; Porubsky, S. Renal disease associated with myeloproliferative neoplasms and myelodysplastic syndrome/myeloproliferative neoplasms. *Histopathology* **2021**, *78*, 738–748. Available online: <https://www.onlinelibrary.wiley.com/doi/abs/10.1111/his.14282> (accessed on 7 January 2021). [CrossRef]
- Karras, A. What nephrologists need to know about hemophagocytic syndrome. *Nat. Rev. Nephrol.* **2009**, *5*, 329–336. [CrossRef] [PubMed]
- Siegel, R.L.; Miller, K.D.; Jemal, A. Cancer statistics, 2017. *CA Cancer J. Clin.* **2017**, *67*, 7–30. [CrossRef] [PubMed]
- Jemal, A.; Siegel, R.; Ward, E.; Murray, T.; Xu, J.; Thun, M.J. Cancer statistics, 2007. *CA Cancer J. Clin.* **2007**, *57*, 43–66. [CrossRef] [PubMed]
- Sawyer, N.; Wadsworth, J.; Wijnen, M.; Gabriel, R. Prevalence, concentration, and prognostic importance of proteinuria in patients with malignancies. *Br. Med. J. Clin. Res. Ed.* **1988**, *296*, 1295–1298. [CrossRef] [PubMed]
- Puolijoki, H.; Mustonen, J.; Pettersson, E.; Pasternack, A.; Lahdensuo, A. Proteinuria and haematuria are frequently present in patients with lung cancer. *Nephrol. Dial. Transplant.* **1989**, *4*, 947–950. [CrossRef] [PubMed]

18. Da'As, N.; Polliack, A.; Cohen, Y.; Amir, G.; Darmon, D.; Kleinman, Y.; Goldfarb, A.W.; Ben-Yehuda, D. Kidney involvement and renal manifestations in non-Hodgkin's lymphoma and lymphocytic leukemia: A retrospective study in 700 patients. *Eur. J. Haematol.* **2001**, *67*, 158–164. [[CrossRef](#)]
19. Li, S.-J.; Chen, H.-P.; Chen, Y.-H.; Zhang, L.-H.; Tu, Y.-M.; Liu, Z.-H. Renal involvement in non-hodgkin lymphoma: Proven by renal biopsy. *PLoS ONE* **2014**, *9*, e95190. [[CrossRef](#)]
20. Poitou-Verkinder, A.-L.; Francois, A.; Drieux, F.; Lepretre, S.; Legallicier, B.; Moulin, B.; Godin, M.; Guerrot, D. The spectrum of kidney pathology in B-cell chronic lymphocytic leukemia / small lymphocytic lymphoma: A 25-year multicenter experience. *PLoS ONE* **2015**, *10*, e0119156. [[CrossRef](#)] [[PubMed](#)]
21. Jhaveri, K.D.; Shah, H.H.; Calderon, K.; Campenot, E.S.; Radhakrishnan, J. Glomerular diseases seen with cancer and chemotherapy: A narrative review. *Kidney Int.* **2013**, *84*, 34–44. [[CrossRef](#)]
22. Wanchoo, R.; Ramirez, C.B.; Barrientos, J.; Jhaveri, K.D. Renal involvement in chronic lymphocytic leukemia. *Clin. Kidney J.* **2018**, *11*, 670–680. [[CrossRef](#)]
23. Obrador, G.T.; Price, B.; O'Meara, Y.; Salant, D.J. Acute renal failure due to lymphomatous infiltration of the kidneys. *J. Am. Soc. Nephrol.* **1997**, *8*, 1348–1354. [[PubMed](#)]
24. Xiao, J.C.; Walz-Mattmüller, R.; Ruck, P.; Horny, H.P.; Kaiserling, E. Renal involvement in myeloproliferative and lymphoproliferative disorders. *A study of autopsy cases. Gen. Diagn. Pathol.* **1997**, *142*, 147–153. [[PubMed](#)]
25. Javaugue, V.; Debiais-Delpech, C.; Nouvier, M.; Gand, E.; Chauvet, S.; Ecotiere, L.; Desport, E.; Goujon, J.-M.; Delwail, V.; Guidez, S.; et al. Clinicopathological spectrum of renal parenchymal involvement in B-cell lymphoproliferative disorders. *Kidney Int.* **2019**, *96*, 94–103. [[CrossRef](#)] [[PubMed](#)]
26. Said, S.M.; Leung, N.; Sethi, S.; Cornell, L.D.; Fidler, M.E.; Grande, J.P.; Herrmann, S.; Tefferi, A.; D'Agati, V.D.; Nasr, S.H. Myeloproliferative neoplasms cause glomerulopathy. *Kidney Int.* **2011**, *80*, 753–759. [[CrossRef](#)] [[PubMed](#)]
27. Thaunat, O.; Delahousse, M.; Fakhouri, F.; Martinez, F.; Stephan, J.-L.; Noël, L.-H.; Karras, A. Nephrotic syndrome associated with hemophagocytic syndrome. *Kidney Int.* **2006**, *69*, 1892–1898. [[CrossRef](#)]
28. Rieu, P.; Noël, L.H.; Droz, D.; Beaufils, H.; Gessain, A.; Hermine, O.; Lesavre, P. Glomerular involvement in lymphoproliferative disorders with hyperproduction of cytokines (Castleman, POEMS). *Adv. Nephrol. Necker Hosp.* **2000**, *30*, 305–331. [[PubMed](#)]
29. Frizzera, G.; Peterson, B.A.; Bayrd, E.D.; Goldman, A. A systemic lymphoproliferative disorder with morphologic features of Castleman's disease: Clinical findings and clinicopathologic correlations in 15 patients. *J. Clin. Oncol.* **1985**, *3*, 1202–1216. [[CrossRef](#)]
30. Schmitz, R.; Stanelle, J.; Hansmann, M.-L.; Küppers, R. Pathogenesis of classical and lymphocyte-predominant Hodgkin lymphoma. *Ann. Rev. Pathol.* **2009**, *4*, 151–174. [[CrossRef](#)]
31. Plager, J.; Stutzman, L. Acute nephrotic syndrome as a manifestation of active Hodgkin's disease. *Am. J. Med.* **1971**, *50*, 56–66. [[CrossRef](#)]
32. Kramer, P.; Sizoo, W.; E Twiss, E. Nephrotic syndrome in Hodgkin's disease. Report of five cases and review of the literature. *Neth. J. Med.* **1981**, *24*, 114–119.
33. Eagen, J.W.; Lewis, E.J. Glomerulopathies of neoplasia. *Kidney Int.* **1977**, *11*, 297–306. [[CrossRef](#)]
34. Audard, V.; Larousserie, F.; Grimbert, P.; Abtahi, M.; Sotto, J.-J.; Delmer, A.; Boue, F.; Nochy, D.; Brousse, N.; Delarue, R.; et al. Minimal change nephrotic syndrome and classical Hodgkin's lymphoma: Report of 21 cases and review of the literature. *Kidney Int.* **2006**, *69*, 2251–2260. [[CrossRef](#)]
35. Aggarwal, N.; Batwara, R.; McCarthy, E.T.; Sharma, R.; Sharma, M.; Savin, V.J. Serum permeability activity in steroid-resistant minimal change nephrotic syndrome is abolished by treatment of Hodgkin disease. *Am. J. Kidney Dis.* **2007**, *50*, 826–829. [[CrossRef](#)] [[PubMed](#)]
36. Moorthy, A.V.; Zimmerman, S.W.; Burkholder, P.M. Nephrotic syndrome in Hodgkin's disease. Evidence for pathogenesis alternative to immune complex deposition. *Am. J. Med.* **1976**, *61*, 471–477. [[CrossRef](#)]
37. Zhang, S.Y.; Audard, V.; Fan, Q.; Pawlak, A.; Lang, P.; Sahali, D. Immunopathogenesis of idiopathic nephrotic syndrome with relapse. *Contrib. Nephrol.* **2011**, *169*, 94–106. [[PubMed](#)]
38. Kapp, U.; Yeh, W.-C.; Patterson, B.; Elia, A.J.; Kägi, D.; Ho, A.; Hessel, A.; Tipsword, M.; Williams, A.; Mirtsos, C.; et al. Interleukin 13 is secreted by and stimulates the growth of Hodgkin and Reed-Sternberg cells. *J. Exp. Med.* **1999**, *189*, 1939–1946. [[CrossRef](#)] [[PubMed](#)]
39. Skinnider, B.F.; Elia, A.J.; Gascoyne, R.D.; Trümper, L.H.; Von Bonin, F.; Kapp, U.; Patterson, B.; E Snow, B.; Mak, T.W. Interleukin 13 and interleukin 13 receptor are frequently expressed by Hodgkin and Reed-Sternberg cells of Hodgkin lymphoma. *Blood* **2001**, *97*, 250–255. [[CrossRef](#)]
40. Van Den Berg, J.G.; Aten, J.; Chand, M.A.; Claessen, N.; Dijkink, L.; Wijdenes, J.; Lakkis, F.G.; Wenning, J.J. Interleukin-4 and interleukin-13 act on glomerular visceral epithelial cells. *J. Am. Soc. Nephrol.* **2000**, *11*, 413–422. [[PubMed](#)]
41. Lai, K.-W.; Wei, C.-L.; Tan, L.-K.; Tan, P.-H.; Chiang, G.S.; Lee, C.G.; Jordan, S.C.; Yap, H.-K. Overexpression of interleukin-13 induces minimal-change—Like nephropathy in rats. *J. Am. Soc. Nephrol.* **2007**, *18*, 1476–1485. [[CrossRef](#)] [[PubMed](#)]
42. Nakayama, S.; Yokote, T.; Kobayashi, K.; Hirata, Y.; Akioka, T.; Hiraoka, N.; Oka, S.; Miyoshi, T.; Takubo, T.; Tsuji, M.; et al. Minimal-change nephrotic syndrome preceding Hodgkin lymphoma by 5 years with expression of tumor necrosis factor α in Hodgkin-Reed-Sternberg cells. *Hum. Pathol.* **2010**, *41*, 1196–1199. [[CrossRef](#)] [[PubMed](#)]

43. Sahali, D.; Sendeyo, K.; Mangier, M.; Audard, V.; Zhang, S.Y.; Lang, P.; Ollero, M.; Pawlak, A. Immunopathogenesis of idiopathic nephrotic syndrome with relapse. *Semin. Immunopathol.* **2014**, *36*, 421–429. [[CrossRef](#)] [[PubMed](#)]
44. Audard, V.; Zhang, S.-Y.; Copie-Bergman, C.; Rucker-Martin, C.; Ory, V.; Candelier, M.; Baia, M.; Lang, P.; Pawlak, A.; Sahali, D. Occurrence of minimal change nephrotic syndrome in classical Hodgkin lymphoma is closely related to the induction of c-mip in Hodgkin-Reed Sternberg cells and podocytes. *Blood* **2010**, *115*, 3756–3762. [[CrossRef](#)] [[PubMed](#)]
45. Kofman, T.; Zhang, S.-Y.; Copie-Bergman, C.; Moktefi, A.; Raimbourg, Q.; Francois, H.; Karras, A.; Plaisier, E.; Painchart, B.; Favre, G.; et al. Minimal change nephrotic syndrome associated with non-Hodgkin lymphoid disorders: A retrospective study of 18 cases. *Medicine* **2014**, *93*, 350–358. [[CrossRef](#)]
46. Hallek, M. Chronic lymphocytic leukemia: 2020 update on diagnosis, risk stratification and treatment. *Am. J. Hematol.* **2019**, *94*, 1266–1287. [[CrossRef](#)]
47. Strati, P.; Nasr, S.H.; Leung, N.; Hanson, C.A.; Chaffee, K.G.; Schwager, S.M.; Achenbach, S.J.; Call, T.G.; Parikh, S.A.; Ding, W.; et al. Renal complications in chronic lymphocytic leukemia and monoclonal B-cell lymphocytosis: The Mayo Clinic experience. *Haematologica* **2015**, *100*, 1180–1188. [[CrossRef](#)]
48. Moulin, B.; Ronco, P.M.; Mougnot, B.; Francois, A.; Fillastre, J.-P.; Mignon, F. Glomerulonephritis in chronic lymphocytic leukemia and related B-cell lymphomas. *Kidney Int.* **1992**, *42*, 127–135. [[CrossRef](#)]
49. Scott, R.B. Leukaemia. *Lancet* **1957**, *272*, 1162–1167. [[CrossRef](#)]
50. Seney, F.D.; Federgreen, W.R.; Stein, H.; Kashgarian, M. A review of nephrotic syndrome associated with chronic lymphocytic leukemia. *Arch Intern. Med.* **1986**, *146*, 137–141. [[CrossRef](#)]
51. Van Wynsberghe, M.; Lenain, P.; Drieux, F.; Guerrot, D.; Bertrand, D. Monoclonal B lymphocytosis and minimal change disease: A new monoclonal B-cell disorder of renal significance? *J. Nephrol.* **2017**, *31*, 317–320. [[CrossRef](#)] [[PubMed](#)]
52. Vial, R.; Daniel, L.; Devos, M.; Bouchacourt, B.; Cazajous, G.; Sichez, H.; Mazodier, K.; Lankester, M.; Gobert, P.; Segulier, J.; et al. Chronic lymphoid leukemia and renal complication: Report on 10 cases from Marseille over 16 years. *Rev. Med. Interne* **2018**, *39*, 612–617. [[CrossRef](#)] [[PubMed](#)]
53. Dimopoulos, M.A.; Kastiris, E. How I treat Waldenström macroglobulinemia. *Blood* **2019**, *134*, 2022–2035. [[CrossRef](#)] [[PubMed](#)]
54. Audard, V.; Georges, B.; Vanhille, P.; Toly-Ndour, C.; Deroure, B.; Fakhouri, F.; Cuvelier, R.; Belenfant, X.; Surin, B.; Aucouturier, P.; et al. Renal lesions associated with IgM-secreting monoclonal proliferations: Revisiting the disease spectrum. *Clin. J. Am. Soc. Nephrol.* **2008**, *3*, 1339–1349. [[CrossRef](#)] [[PubMed](#)]
55. Chauvet, S.; Bridoux, F.; Ecotièrre, L.; Javaugue, V.; Sirac, C.; Arnulf, B.; Thierry, A.; Quellard, N.; Milin, S.; Bender, S.; et al. Kidney diseases associated with monoclonal immunoglobulin M-secreting B-cell lymphoproliferative disorders: A case series of 35 patients. *Am. J. Kidney Dis.* **2015**, *66*, 756–767. [[CrossRef](#)] [[PubMed](#)]
56. Higgins, L.; Nasr, S.H.; Said, S.M.; Kapoor, P.; Dingli, D.; King, R.L.; Rajkumar, S.V.; Kyle, R.A.; Kourelis, T.; Gertz, M.A.; et al. Kidney involvement of patients with Waldenström macroglobulinemia and other IgM-producing B cell lymphoproliferative disorders. *Clin. J. Am. Soc. Nephrol.* **2008**, *13*, 1037–1046. [[CrossRef](#)]
57. Vos, J.M.; Gustine, J.; Rennke, H.G.; Hunter, Z.; Manning, R.J.; Dubeau, T.E.; Meid, K.; Minnema, M.C.; Kersten, M.-J.; Treon, S.P.; et al. Renal disease related to Waldenström macroglobulinaemia: Incidence, pathology and clinical outcomes. *Br. J. Haematol.* **2016**, *175*, 623–630. [[CrossRef](#)]
58. Da Silva, W.F., Jr.; de Farias Pinho, L.L.; de Farias, C.L.G.; Torres, V.; Costalonga, E.C.; Filho, G.C.; de Abreu Testagrossa, L.; Rocha, V.; Buccheri, V. Renal infiltration presenting as acute kidney injury in Hodgkin lymphoma—A case report and review of the literature. *Leuk. Res. Rep.* **2018**, *10*, 41–43. [[CrossRef](#)] [[PubMed](#)]
59. Uprety, D.; Peterson, A.; Shah, B.K. Renal failure secondary to leukemic infiltration of kidneys in CLL—A case report and review of literature. *Ann. Hematol.* **2013**, *92*, 271–273. [[CrossRef](#)]
60. Corlu, L.; Rioux-Leclercq, N.; Ganard, M.; Decaux, O.; Houot, R.; Vigneau, C. Renal dysfunction in patients with direct infiltration by B-cell lymphoma. *Kidney Int. Rep.* **2019**, *4*, 688–697. [[CrossRef](#)] [[PubMed](#)]
61. Törnroth, T.; Heiro, M.; Marcussen, N.; Franssila, K. Lymphomas diagnosed by percutaneous kidney biopsy. *Am. J. Kidney Dis.* **2003**, *42*, 960–971. [[CrossRef](#)] [[PubMed](#)]
62. Attias, P.; Moktefi, A.; Matignon, M.; Dupuis, J.; Debais-Delpech, C.; Grimbart, P.; Lang, P.; Audard, V. Monotypic plasma cell interstitial nephritis as the only clinical manifestation in a patient with previously undiagnosed indolent multiple myeloma: A case report. *Medicine* **2016**, *95*, e4391. [[CrossRef](#)] [[PubMed](#)]
63. Spivak, J.L. Myeloproliferative neoplasms. *N. Engl. J. Med.* **2017**, *376*, 2168–2181. [[CrossRef](#)] [[PubMed](#)]
64. Christensen, A.S.; Møller, J.B.; Hasselbalch, H.C. Chronic kidney disease in patients with the Philadelphia-negative chronic myeloproliferative neoplasms. *Leuk. Res.* **2014**, *38*, 490–495. [[CrossRef](#)] [[PubMed](#)]
65. Benn, C.L.; Dua, P.; Gurrell, R.; Loudon, P.; Pike, A.; Storer, R.I.; Vangjeli, C. Physiology of hyperuricemia and urate-lowering treatments. *Front. Med.* **2018**, *5*, 160. Available online: <https://www.ncbi.nlm.nih.gov/pmc/articles/PMC5990632/> (accessed on 27 October 2020). [[CrossRef](#)]
66. Özpölat, T.; Kayar, Y. Acute renal infarction: A presentation of essential thrombocytosis. *Kidney Int.* **2017**, *92*, 1292. [[CrossRef](#)] [[PubMed](#)]
67. Carobbio, A.; Ferrari, A.; Masciulli, A.; Ghirardi, A.; Barosi, G.; Barbui, T. Leukocytosis and thrombosis in essential thrombocythemia and polycythemia vera: A systematic review and meta-analysis. *Blood Adv.* **2019**, *3*, 1729–1737. [[CrossRef](#)]

68. Agarwal, A.; Morrone, K.; Bartenstein, M.; Zhao, Z.J.; Verma, A.; Goel, S. Bone marrow fibrosis in primary myelofibrosis: Pathogenic mechanisms and the role of TGF- β . *Stem Cell Investig.* **2016**, *3*, 5. [PubMed]
69. Steurer, M.; Zoller, H.; Augustin, F.; Fong, D.; Heiss, S.; Strasser-Weippl, K.; Gastl, G.; Tzankov, A. Increased angiogenesis in chronic idiopathic myelofibrosis: Vascular endothelial growth factor as a prominent angiogenic factor. *Hum. Pathol.* **2007**, *38*, 1057–1064. [CrossRef] [PubMed]
70. Wada, T.; Pippin, J.W.; Terada, Y.; Shankland, S.J. The cyclin-dependent kinase inhibitor p21 is required for TGF-beta1-induced podocyte apoptosis. *Kidney Int.* **2005**, *68*, 1618–1629. [CrossRef]
71. Schiffer, M.; Bitzer, M.; Roberts, I.S.; Kopp, J.B.; ten Dijke, P.; Mundel, P.; Bottinger, E. Apoptosis in podocytes induced by TGF-beta and Smad7. *J. Clin. Investig.* **2001**, *108*, 807–816. [CrossRef] [PubMed]
72. Belliere, J.; Colombat, M.; Kounde, C.; Recher, C.; Ribes, D.; Huart, A.; Chauveau, D.; Demas, V.; Luquet, I.; Beyne-Rauzy, O.; et al. Kidney involvement in patients with chronic myelomonocytic leukemia or BCR-ABL–Negative myeloproliferative neoplasms. *Kidney Int. Rep.* **2021**, *6*, 737–745. Available online: [https://kireports.org/article/S2468-0249\(20\)31802-7/abstract](https://kireports.org/article/S2468-0249(20)31802-7/abstract) (accessed on 7 January 2021). [CrossRef] [PubMed]
73. Alexander, M.P.; Nasr, S.H.; Kurtin, P.J.; Casey, E.T.; Hernandez, L.P.H.; E Fidler, M.; Sethi, S.; Cornell, L.D. Renal extramedullary hematopoiesis: Interstitial and glomerular pathology. *Mod. Pathol.* **2015**, *28*, 1574–1583. [CrossRef] [PubMed]
74. Pasquet, F.; Pavic, M.; Ninet, J.; Hot, A. Auto-immune diseases and cancers. Second part: Auto-immune diseases complicating cancers and their treatment. *Rev. Med. Interne* **2014**, *35*, 656–663. [CrossRef] [PubMed]
75. Saitoh, T.; Murakami, H.; Uchiumi, H.; Moridaira, K.; Maehara, T.; Matsushima, T.; Tsukamoto, N.; Tamura, J.; Karasawa, M.; Naruse, T.; et al. Myelodysplastic syndromes with nephrotic syndrome. *Am. J. Hematol.* **1999**, *60*, 200–204. [CrossRef]
76. Pinheiro, R.F.; Silva, M.R.R.; Chauffaille, M.D.L.L. The 5q- syndrome and autoimmune phenomena: Report of three cases. *Leuk. Res.* **2006**, *30*, 507–510. [CrossRef]
77. Morschhauser, F.; Wattel, E.; Pagniez, D.; Lovi, V.; Rose, C.; Bauters, F.; Fenaux, P. Glomerular injury in chronic myelomonocytic leukemia. *Leuk. Lymphoma* **1995**, *18*, 479–483. [CrossRef] [PubMed]
78. Bogdanović, R.; Kuzmanović, M.; Marković-Lipkovski, J.; Ognjanović, M.; Mičić, D.; Stanković, I.; Stajic, N.; Nikolic, V.; Bunjevacki, G. Glomerular involvement in myelodysplastic syndromes. *Pediatr. Nephrol.* **2001**, *16*, 1053–1057. [CrossRef] [PubMed]
79. Schwotzer, N.; Provot, F.; Ville, S.; Daniel, L.; Le Fur, A.; Kissling, S.; Jourde-Chiche, N.; Karras, A.; Moreau, A.; Augusto, J.-F.; et al. Spectrum of kidney involvement in patients with myelodysplastic syndromes. *Kidney Int. Rep.* **2021**, *6*, 746–754. Available online: [https://www.kireports.org/article/S2468-0249\(20\)31864-7/abstract](https://www.kireports.org/article/S2468-0249(20)31864-7/abstract) (accessed on 7 January 2021). [CrossRef]
80. Dispenzieri, A.; Fajgenbaum, D.C. Overview of Castleman disease. *Blood* **2020**, *135*, 1353–1364. [CrossRef]
81. Yuan, X.-G.; Hu, W.; Chen, F.-F.; Huang, B.-F.; Zhao, X.-Y. Renal complications of Castleman’s disease: Report of two cases and analysis of 75 cases. *Clin. Exp. Nephrol.* **2011**, *15*, 921–926. [CrossRef] [PubMed]
82. Fajgenbaum, D.C. Novel insights and therapeutic approaches in idiopathic multicentric Castleman disease. *Hematology* **2018**, *2018*, 318–325. [CrossRef] [PubMed]
83. Nagayama, Y.; Yamano, M.; Yagame, M.; Nariyama, T.; Takahashi, M.; Kawamoto, M.; Matsui, K. TAFRO syndrome as a cause of glomerular microangiopathy: A case report and literature review. *BMC Nephrol.* **2019**, *20*, 375–379. [CrossRef] [PubMed]
84. Mizuno, H.; Sawa, N.; Watanabe, S.; Ikuma, D.; Sekine, A.; Kawada, M.; Yamanouchi, M.; Hasegawa, E.; Suwabe, T.; Hoshino, J.; et al. The clinical and histopathological feature of renal manifestation of TAFRO syndrome. *Kidney Int. Rep.* **2020**, *5*, 1172–1179. [CrossRef] [PubMed]
85. Dispenzieri, A. POEMS Syndrome: 2019 Update on diagnosis, risk-stratification, and management. *Am. J. Hematol.* **2019**, *94*, 812–827. [CrossRef]
86. Dispenzieri, A.; Kyle, R.A.; Lacy, M.Q.; Rajkumar, S.V.; Therneau, T.M.; Larson, D.R.; Greipp, P.R.; Witzig, T.E.; Basu, R.; Suarez, G.A.; et al. POEMS syndrome: Definitions and long-term outcome. *Blood* **2003**, *101*, 2496–2506. [CrossRef]
87. Jourde-Chiche, N.; Dussol, B.; Daniel, L. Kidney involvement in hematologic malignancies. Diagnostic approach. *Rev. Med. Interne* **2010**, *31*, 685–696. [CrossRef]
88. Nakamoto, Y.; Imai, H.; Yasuda, T.; Wakui, H.; Miura, A.B. A spectrum of clinicopathological features of nephropathy associated with POEMS syndrome. *Nephrol. Dial. Transplant.* **1999**, *14*, 2370–2386. [CrossRef] [PubMed]
89. Wang, Y.; Yan, Y.; Sui, Z.; Dong, B.; Zuo, L. A case report of POEMS syndrome with renal involvement as immunotactoid glomerulopathy. *Medicine* **2018**, *97*, e9920. Available online: <https://www.ncbi.nlm.nih.gov/pmc/articles/PMC5851753/> (accessed on 3 January 2021). [CrossRef]
90. Lambotte, O.; Dürrbach, A.; Ammor, M.; Paradis, V.; Djeflal, R.; Machover, D.; Charpentier, B. Association of a POEMS syndrome and light chain deposit disease: First case report. *Clin. Nephrol.* **2001**, *55*, 482–486. [PubMed]
91. Janka, G.E. Hemophagocytic syndromes. *Blood Rev.* **2007**, *21*, 245–253. [CrossRef] [PubMed]
92. Sawhney, S.; Woo, P.; Murray, K.J. Macrophage activation syndrome: A potentially fatal complication of rheumatic disorders. *Arch. Dis. Child.* **2001**, *85*, 421–426. [CrossRef] [PubMed]
93. Kopp, J.B.; Nelson, G.W.; Sampath, K.; Johnson, R.C.; Genovese, G.; An, P.; Friedman, D.; Briggs, W.; Dart, R.; Korbet, S.; et al. APOL1 genetic variants in focal segmental glomerulosclerosis and HIV-associated nephropathy. *J. Am. Soc. Nephrol.* **2011**, *22*, 2129–2137. [CrossRef] [PubMed]

94. Amoura, A.; Moktefi, A.; Halfon, M.; Karras, A.; Rafat, C.; Gibier, J.-B.; Gleeson, P.J.; Servais, A.; Argy, N.; Maillé, P.; et al. Malaria, Collapsing glomerulopathy, and focal and segmental glomerulosclerosis. *Clin. J. Am. Soc. Nephrol.* **2020**, *15*, 964–972. Available online: <https://cjasn.asnjournals.org/content/early/2020/05/21/CJN.00590120> (accessed on 3 January 2021). [[CrossRef](#)] [[PubMed](#)]
95. Santoriello, D.; Hogan, J.; D’Agati, V.D. Hemophagocytic syndrome with histiocytic glomerulopathy and intraglomerular hemophagocytosis. *Am. J. Kidney Dis.* **2016**, *67*, 978–983. [[CrossRef](#)]
96. Eirin, A.; Irazabal, M.V.; Fervenza, F.C.; Sethi, S. Histiocytic glomerulopathy associated with macrophage activation syndrome. *Clin. Kidney J.* **2015**, *8*, 157–160. [[CrossRef](#)] [[PubMed](#)]
97. Farrugia, M.E.; Goodfellow, J.A. A practical approach to managing patients with Myasthenia Gravis—Opinions and a review of the literature. *Front. Neurol.* **2020**, *11*, 60. Available online: www.ncbi.nlm.nih.gov/pmc/articles/PMC7358547/ (accessed on 30 October 2020). [[CrossRef](#)] [[PubMed](#)]
98. Hoffacker, V.; Schultz, A.; Tiesinga, J.J.; Gold, R.; Schalke, B.; Nix, W.; Kiefer, R.; Müller-Hermelink, H.K.; Marx, A. Thymomas alter the T-cell subset composition in the blood: A potential mechanism for thymoma-associated autoimmune disease. *Blood* **2000**, *96*, 3872–3879. [[CrossRef](#)]
99. Karras, A.; De Montpreville, V.; Fakhouri, F.; Grünfeld, J.-P.; Lesavre, P. Renal and thymic pathology in thymoma-associated nephropathy: Report of 21 cases and review of the literature. *Nephrol. Dial. Transplant.* **2005**, *20*, 1075–1082. [[CrossRef](#)]
100. Le Berre, L.; Hervé, C.; Buzelin, F.; Usual, C.; Soulillou, J.-P.; Dantal, J. Renal macrophage activation and Th2 polarization precedes the development of nephrotic syndrome in Buffalo/Mna rats. *Kidney Int.* **2005**, *68*, 2079–2090. [[CrossRef](#)]
101. Le Berre, L.; Godfrin, Y.; Günther, E.; Buzelin, F.; Perretto, S.; Smit, H.; Kerjachki, D.; Usal, C.; Cuturi, C.; Soulillou, J.-P.; et al. Extrarenal effects on the pathogenesis and relapse of idiopathic nephrotic syndrome in Buffalo/Mna rats. *J. Clin. Investig.* **2002**, *109*, 491–498. [[CrossRef](#)] [[PubMed](#)]