



# **Candida albicans and Candida dubliniensis Show Different Trailing Effect Patterns When Exposed to Echinocandins and Azoles**

Rania Ayadi, Emilie Sitterlé, Christophe D'Enfert, Eric Dannaoui,  
Marie-Elisabeth Bournoux

## **► To cite this version:**

Rania Ayadi, Emilie Sitterlé, Christophe D'Enfert, Eric Dannaoui, Marie-Elisabeth Bournoux. Candida albicans and Candida dubliniensis Show Different Trailing Effect Patterns When Exposed to Echinocandins and Azoles. *Frontiers in Microbiology*, 2020, 11, pp.1286. 10.3389/FMICB.2020.01286 . hal-03950323

**HAL Id: hal-03950323**

**<https://hal.u-pec.fr/hal-03950323>**

Submitted on 30 Jan 2023

**HAL** is a multi-disciplinary open access archive for the deposit and dissemination of scientific research documents, whether they are published or not. The documents may come from teaching and research institutions in France or abroad, or from public or private research centers.

L'archive ouverte pluridisciplinaire **HAL**, est destinée au dépôt et à la diffusion de documents scientifiques de niveau recherche, publiés ou non, émanant des établissements d'enseignement et de recherche français ou étrangers, des laboratoires publics ou privés.



Distributed under a Creative Commons Attribution 4.0 International License



# *Candida albicans* and *Candida dubliniensis* Show Different Trailing Effect Patterns When Exposed to Echinocandins and Azoles

Rania Ayadi<sup>1</sup>, Emilie Sitterlé<sup>2,3</sup>, Christophe d'Enfert<sup>3</sup>, Eric Dannaoui<sup>1,4\*†</sup> and Marie-Elisabeth Bougnoux<sup>2,3\*†</sup>

<sup>1</sup> Unité de Parasitologie-Mycologie, Service de Microbiologie, Faculté de Médecine, APHP, Hôpital Européen Georges Pompidou, Université Paris-Descartes, Paris, France, <sup>2</sup> Unité de Parasitologie-Mycologie, Service de Microbiologie, Faculté de Médecine, APHP, Hôpital Necker Enfants-Malades, Université Paris-Descartes, Paris, France, <sup>3</sup> Unité Biologie et Pathogénicité Fongiques, Institut Pasteur, USC 2019 INRA, Paris, France, <sup>4</sup> Dynamyc Research Group, Paris Est Créteil University (UPEC, EnvA), Créteil, France

## OPEN ACCESS

### Edited by:

Miguel Cacho Teixeira,  
University of Lisbon, Portugal

### Reviewed by:

Jesus Guinea,  
Gregorio Marañón Hospital, Spain  
Cheshta Sharma,  
The University of Texas Health  
Science Center at San Antonio,  
United States

### \*Correspondence:

Eric Dannaoui  
eric.dannaoui@aphp.fr  
Marie-Elisabeth Bougnoux  
bougnoux@pasteur.fr;  
elisabeth.bougnoux-  
andremont@pasteur.fr

† These authors have contributed  
equally to this work

### Specialty section:

This article was submitted to  
Antimicrobials, Resistance  
and Chemotherapy,  
a section of the journal  
Frontiers in Microbiology

Received: 19 December 2019

Accepted: 20 May 2020

Published: 16 June 2020

### Citation:

Ayadi R, Sitterlé E, d'Enfert C,  
Dannaoui E and Bougnoux M-E  
(2020) *Candida albicans* and *Candida dubliniensis* Show Different Trailing  
Effect Patterns When Exposed  
to Echinocandins and Azoles.  
Front. Microbiol. 11:1286.  
doi: 10.3389/fmicb.2020.01286

When *Candida albicans* and *Candida dubliniensis* isolates were tested for susceptibility to fluconazole and echinocandins using either EUCAST or Etest methods, differential patterns of growth were observed, independently of the methods used. For *C. albicans*, a trailing phenomenon (incomplete growth inhibition at supra-MICs) was observed with fluconazole in 90% and 93.3% for EUCAST and Etest, respectively, but not with echinocandins (<7% for EUCAST and 0% for Etest). In contrast, for *C. dubliniensis*, a trailing phenomenon was very rarely observed with fluconazole (20% for EUCAST and 0% for Etest), while the opposite pattern was observed with echinocandins (>50% for EUCAST and >86% for Etest). This suggests that the pathways involved in the trailing effect might be different between these two related species. Furthermore, clinical microbiologists must be aware of these species-specific patterns for a reliable MIC determination.

**Keywords:** *C. albicans*, *C. dubliniensis*, trailing, EUCAST, antifungal susceptibility testing, Etest, echinocandins

## INTRODUCTION

*Candida dubliniensis* is a commensal of the oral cavity but can also colonize other anatomical sites (Loreto et al., 2010). Furthermore, it can cause oropharyngeal candidiasis, mainly in HIV-positive patients (Sullivan et al., 2005; Loreto et al., 2010), and invasive candidiasis (Pfaller et al., 2014a). *C. dubliniensis* is closely related to *Candida albicans* (Sullivan et al., 2005). *C. albicans* and *C. dubliniensis* share the same *in vitro* antifungal susceptibility patterns (Pfaller et al., 1999; Lortholary et al., 2007). The clinical breakpoints (CBs) and Epidemiological Cut-Off values (ECOFFs), determined by CLSI/EUCAST reference methods or commercial methods are similar (Pfaller et al., 2014b; Espinel-Ingroff et al., 2019<sup>1</sup>). Acquired resistance to antifungal has been reported in *C. dubliniensis* just as in *C. albicans* (Perea et al., 2002; Coleman et al., 2010; Prigent et al., 2017), but less frequently (Pfaller et al., 1999). Until recently, identification of *C. dubliniensis* was difficult in the clinical laboratories because it shares *C. albicans* phenotypic characteristics (Sullivan et al., 2005; Loreto et al., 2010). Things changed with the use of Matrix-Assisted Laser Desorption Ionization–Time of

<sup>1</sup> <http://www.eucast.org/astoffungi/clinicalbreakpointsforantifungals/>

Flight (MALDI-TOF), which can easily differentiate the two species (Roberts et al., 2016). There are some striking differences between *C. albicans* and *C. dubliniensis*. First, their ecological niches are different. Unlike *C. albicans*, *C. dubliniensis* is uncommon in the gastro-intestinal tract of healthy individuals, but for the oral cavity (Strati et al., 2016). Second, there are major difference in term of pathogenicity, *C. albicans* being more pathogenic (Moran et al., 2012).

Recently, we also observed differential growth patterns between *C. albicans* and *C. dubliniensis* when they are tested by Etest for susceptibility to fluconazole and echinocandins. With *C. dubliniensis*, a trailing effect (incomplete growth inhibition at supra-MICs) was observed with echinocandins but not with fluconazole, while for *C. albicans* the opposite pattern was seen. To further assess these differences between the two species,

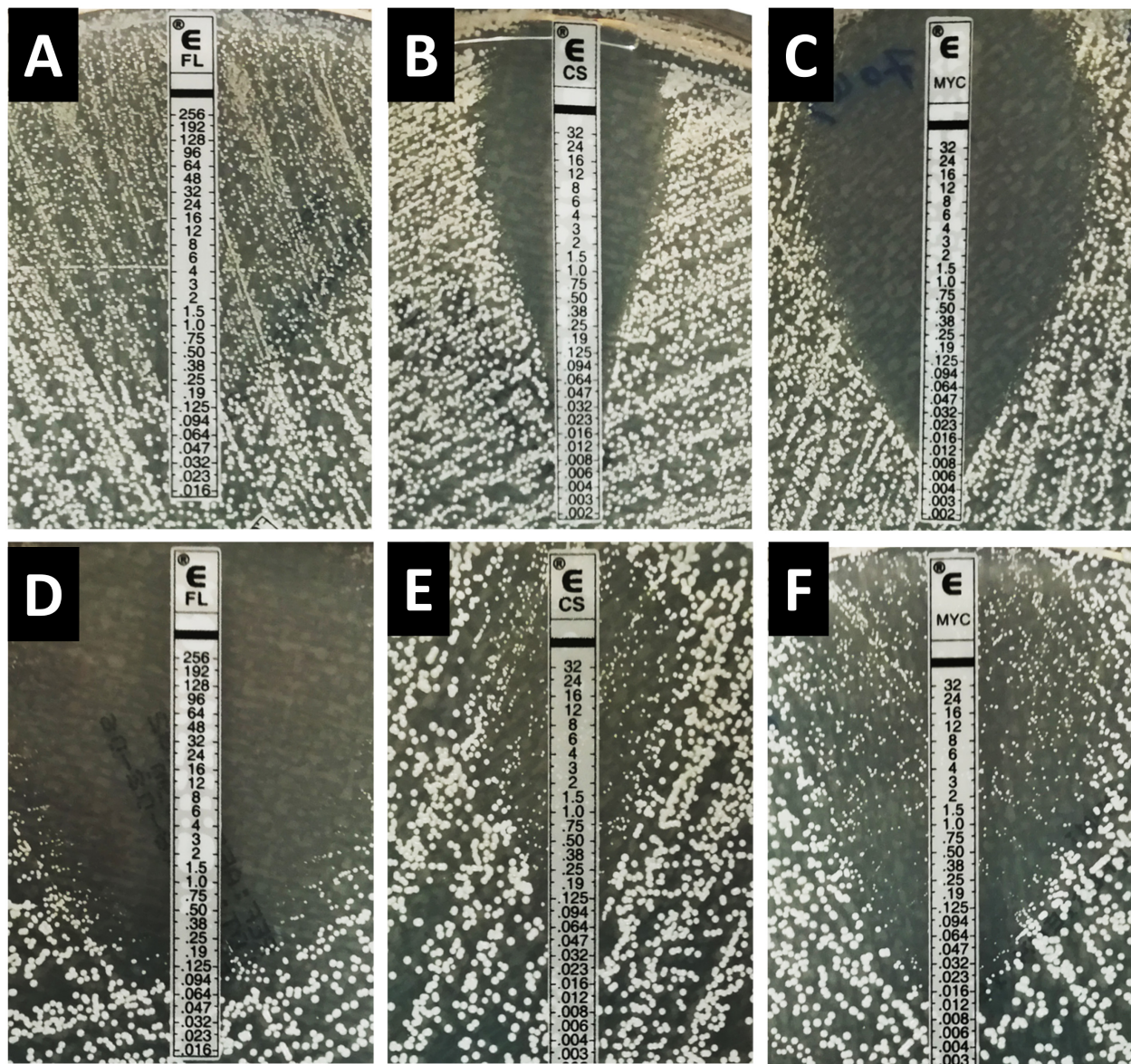
**TABLE 1 |** MIC distribution of fluconazole, caspofungin and micafungin against *C. albicans* and *C. dubliniensis* by EUCAST and Etest methods.

Antifungal												
Species	Method	ATF	Concentration (ug/ml)									
			0.008	0.015	0.03	0.06	0.125	0.25	0.5	1	2	4
C. albicans	EUCAST	24 h	FCZ					14	14	2		
C. dubliniensis								23	5	1		1
C. albicans	EUCAST	24 h	CAS					8	21	1		
C. dubliniensis								8	16	6		
C. albicans	EUCAST	24 h	MIC		30							
C. dubliniensis					30							
C. albicans	EUCAST	48 h	FCZ					13	17			
C. dubliniensis								22	4	1		1
C. albicans	EUCAST	48 h	CAS					5	21	4		
C. dubliniensis								6	11	12	1	
C. albicans	EUCAST	48 h	MIC		26	3	1					
C. dubliniensis					26	3	1					
C. albicans	Etest	24 h	FCZ				2	20	8			
C. dubliniensis						2	13	12	2	1		
C. albicans	Etest	24 h	CAS			3	9	17	1			
C. dubliniensis						1	3	24	2			
C. albicans	Etest	24 h	MIC	25	5							
C. dubliniensis				15	15							
C. albicans	Etest	48 h	FCZ				2	15	13			
C. dubliniensis						1	13	13	1	2		
C. albicans	Etest	48 h	CAS				9	15	6			
C. dubliniensis							3	18	9			
C. albicans	Etest	48 h	MIC	20	10							
C. dubliniensis				6	21	3						

**TABLE 2 |** Trailing observed for fluconazole, micafungin, and caspofungin against *C. albicans* and *C. dubliniensis* by EUCAST and Etest methods.

Method	Species	Trailing	% of isolates with trailing					
			Fluconazole		Micafungin		Caspofungin	
			24 h	48 h	24 h	48 h	24 h	48 h
EUCAST	<i>C. albicans</i>	Moderate	20	16.7	0	0	0	0
		Strong	73.3	73.3	0	6.7	0	0
		Total	93.3	90	0	6.7	0	0
	<i>C. dubliniensis</i>	Moderate	16.7	6.7	6.7	40	3.3	16.7
		Strong	10	13.3	0	16.7	10	33.3
		Total	26.7	20	6.7	56.7	13.3	50
Etest	<i>C. albicans</i>	Total	43.3	93.3	0	0	0	0
	<i>C. dubliniensis</i>	Total	0	0	3.3	86.7	6.7	90





**FIGURE 1 |** Inhibition pattern by Etest for fluconazole, caspofungin, and micafungin for the strain *C. albicans* HEGP 7043 (A–C) and *C. dubliniensis* HEGP 6443 (D–F). FL, fluconazole; CS, caspofungin; MYC, micafungin.

we analyzed, here, the growing patterns of a large panel of clinical isolates of the two species when tested against fluconazole and two echinocandins by the reference EUCAST technique and by Etest.

## MATERIALS AND METHODS

To study the growth of *C. albicans* and *C. dubliniensis* in the presence of fluconazole, caspofungin or micafungin, a total number of 30 *C. albicans* and 30 *C. dubliniensis* clinical epidemiologically not related isolates were selected from the mycology's laboratories of Necker and Georges Pompidou

University hospitals. None of these strains were known to be resistant to echinocandins or azoles.

These 60 isolates were tested using two different methods: the EUCAST EDef 7.3 microdilution procedure and the Etest agar diffusion method (Biomérieux, Marcy-l'Étoile, France). The yeasts were first cultured on BBL CHROMagar Candida plate (Becton Dickinson GmbH, Heidelberg, France) for primary identification and then identified by MALDI-TOF spectrometry (microflex LT, Bruker Daltonik GmbH, Germany).

Antifungal susceptibility testing by EUCAST was performed according to the reference method (Arendrup et al., 2017) in RPMI 1640 medium buffered to pH 7.0 with morpholino-propanesulfonic acid (MOPS) and supplemented with glucose to

a final concentration of 2%. The final inoculum was  $0.5\text{--}2.5 \times 10^5$  CFU/ml. *Candida krusei* ATCC 6258 and *Candida parapsilosis* ATCC 22019 isolates were used as quality control strains. Spectrophotometric reading was performed after incubation at 35°C, and MICs were determined with a 50% inhibition endpoint. The percentage of growth was determined compared to the drug-free control. The trailing effect was defined as a reduced but persistent ( $\geq 5\%$ ) growth (G) above the MIC of the isolate, at least in four consecutive wells. Consequently, two groups of trailing effect were defined depending on G, as previously described (Rueda et al., 2017): moderate trailing for G between 5 and 25%, strong trailing when G is  $> 25$  but  $< 50\%$ ,

Antifungal susceptibility testing by Etest was performed according to manufacturer's instructions (Biomérieux, 2013). The presence of microcolonies in the ellipse of inhibition after incubation at 35°C defined the trailing effect and was not indicative of resistance. Due to the subjective nature of the visual reading, the level of the trailing effect was not categorized by the Etest method.

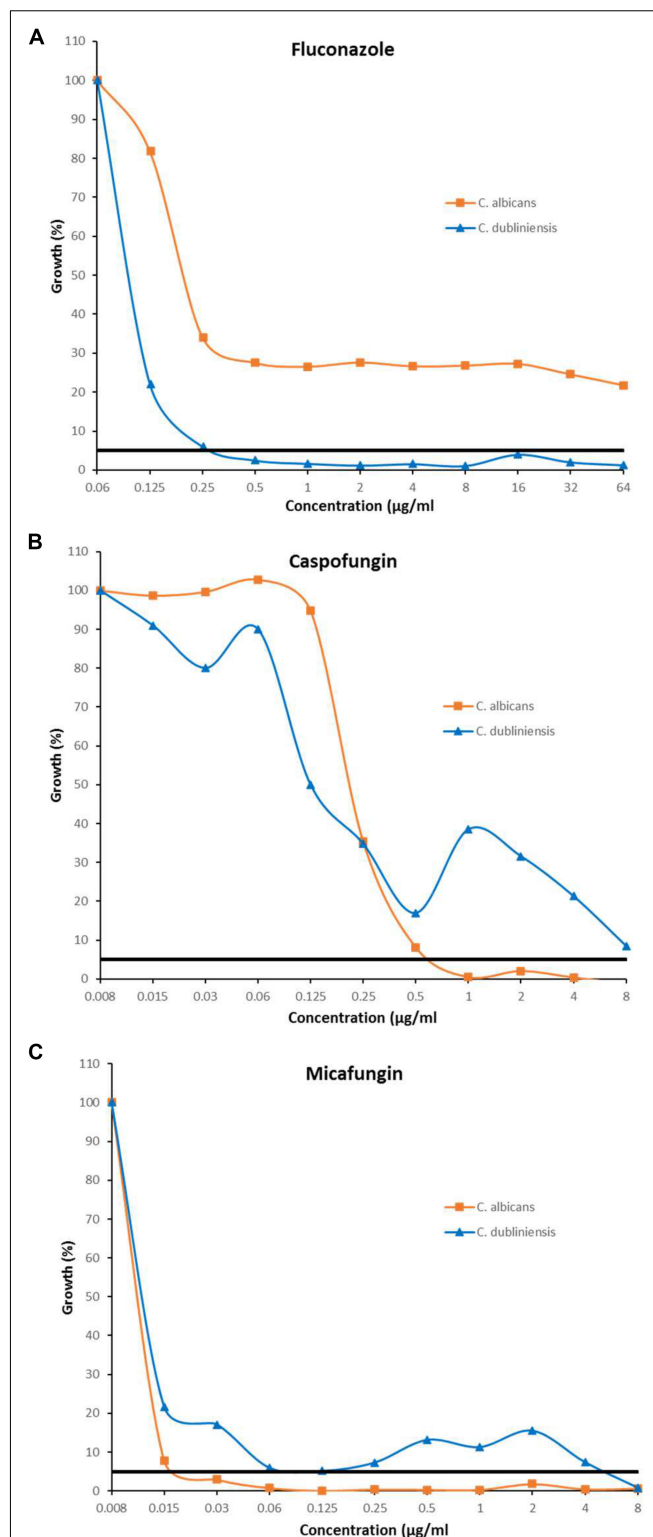
For both techniques (EUCAST, 2019) reading was performed at 24 and 48 h. Indeed, for Etest the period incubation depends on the growth and could be 24 h and/or 48 h. Moreover, it is recommended to read at 48 h for detection of some phenomenon such as heteroresistance. For these reasons, Etest reading is often performed both at 24 and 48 h. Therefore, we also determined MICs by EUCAST at 24 h and 48 h.

## RESULTS

With Etest, MIC values at 24 h determined for fluconazole, micafungin, and caspofungin for *C. albicans* ranged from 0.06 to 0.25  $\mu\text{g/ml}$  [Geometric mean (GM) = 0.14  $\mu\text{g/ml}$ ], from 0.008 to 0.016 (GM = 0.009  $\mu\text{g/ml}$ ), and from 0.03 to 0.25  $\mu\text{g/ml}$  (GM = 0.09  $\mu\text{g/ml}$ ), respectively, while for *C. dubliniensis* MICs ranged from 0.03 to 0.5 (GM = 0.09  $\mu\text{g/ml}$ ), from 0.008 to 0.016 (GM = 0.01  $\mu\text{g/ml}$ ), and from 0.03 to 0.25 (GM = 0.12  $\mu\text{g/ml}$ ), respectively. MIC distributions determined by Etest at both 24 h and 48 h are presented in **Table 1**.

With fluconazole, a trailing effect was observed with Etest for 93.3% of *C. albicans* isolates while no trailing was seen with the two echinocandins (**Table 2** and **Figure 1**). In contrast, for the *C. dubliniensis* isolates, trailing was not observed with fluconazole, while trailing was observed for echinocandins in 86.7% and 90% of the isolates for micafungin and caspofungin, respectively (**Table 2** and **Figure 1**). In order to confirm that the differential pattern of growth was not related to the susceptibility testing method used, all the strains were also tested by EUCAST (**Table 1**). MICs determined by EUCAST were within  $\pm 2 \log_2$  dilutions of the Etest MICs in  $> 98\%$  of the cases.

The inhibition patterns obtained with Etest, were also observed by EUCAST for *C. albicans* and *C. dubliniensis* (**Table 2**). Indeed, for fluconazole, the trailing was seen for *C. albicans* and not for *C. dubliniensis* while the opposite pattern was observed with echinocandins. For *C. albicans*, 90% of the isolates exhibited a trailing effect for fluconazole while only 6.7%, and 0% of the isolates showed a trailing for micafungin, and



**FIGURE 2 |** Inhibition pattern by EUCAST in presence of fluconazole (A), caspofungin (B), and micafungin (C) for the strains *C. albicans* HEGP 7043 and *C. dubliniensis* HEGP 6409. MICs correspond to the lowest antifungal concentration for which the growth is  $< 50\%$ . Trailing correspond to a growth between 5 and 49%. Black horizontal line represents the 5% growth threshold.



casposfungin, respectively. For *C. dubliniensis* only 20% of the isolates showed a trailing effect for fluconazole, while 56.7%, and 50% of isolates exhibited a trailing effect for micafungin and casposfungin, respectively (Table 2). All together, these data clearly demonstrated that the trailing is species specific. Figure 2 showed an example of the trailing effect observed for one isolate each of *C. albicans* and *C. dubliniensis* for the three antifungal agents.

The level of trailing effect was always of strong intensity (according to the definition) except for micafungin with *C. dubliniensis* isolates for which a moderate trailing was mostly observed (Table 2).

## DISCUSSION

Although *C. albicans* and *C. dubliniensis* are closely related phylogenetically (Sullivan et al., 2005) and exhibit the same antifungal susceptibility patterns, we found that they behave differently *in vitro* in presence of fluconazole or echinocandins. For *C. albicans*, a trailing phenomenon was observed with fluconazole and not for the echinocandin, while for *C. dubliniensis*, the opposite pattern of growth was seen (i.e., no trailing with fluconazole and trailing with echinocandins). Differential *in vitro* response to echinocandin and azole antifungal agents between *C. albicans* and *C. dubliniensis* has been previously reported by EUCAST and CLSI methods (Arthington-Skaggs et al., 2002; Jacobsen et al., 2007). Our results are in accordance with these previous reports and show that the phenomenon is also present when isolates are tested

by a completely different method (i.e., Etest, an agar diffusion method), therefore not dependent on the technique.

Trailing effect of *C. albicans* to fluconazole is well known (Delarze and Sanglard, 2015; Marcos-Zambrano et al., 2016; Rosenberg et al., 2018) and may have a clinical impact (Rosenberg et al., 2018). Here we observed that this effect is not present for the sibling species *C. dubliniensis*. Altogether, these findings could suggest that the pathways involved in the trailing effect may be different in the two species. The comparative study of these two species may help deciphering the mechanisms involved in tolerance in *C. albicans*.

Finally, our findings are important for the clinical microbiology laboratories and clinical care. Indeed, the trailing observed when echinocandins are tested against *C. dubliniensis* should be known and the corresponding strains should not be considered as resistant pattern to these important drugs.

## DATA AVAILABILITY STATEMENT

All datasets generated for this study are included in the article/supplementary material.

## AUTHOR CONTRIBUTIONS

M-EB, CD'E, and ED designed the study. RA and ES performed the experiments. M-EB, RA, and ED analyzed the data. M-EB and ED wrote the manuscript. All authors listed have approved and corrected the manuscript.

## REFERENCES

- Arendrup, M. C., Meletiadis, J., Mouton, J. W., Lagrou, K., Hamal, P., and Guinea, J. (2017). Subcommittee on Antifungal Susceptibility Testing (Afst) of the Escmid European Committee for Antimicrobial Susceptibility Testing (Eucast) in Method for the Determination of Broth Dilution Minimum Inhibitory Concentrations of Antifungal Agents for Yeasts. EUCAST definitive document E.Def 7.3.1. *Clin. Microbiol. Infect.* 18, E246–E247.
- Arthington-Skaggs, B. A., Lee-Yang, W., Ciblak, M. A., Frade, J. P., Brandt, M. E., Hajjeh, R. A., et al. (2002). Comparison of visual and spectrophotometric methods of broth microdilution MIC end point determination and evaluation of a sterol quantitation method for *in vitro* susceptibility testing of fluconazole and itraconazole against trailing and nontrailing *Candida* isolates. *Antimicrob. Agents Chemother.* 46, 2477–2481. doi: 10.1128/aac.46.8.2477-2481.2002
- Biomérieux, S. A. (2013). *Etest Antifungal Susceptibility Testing Package Insert*. France: bioMérieux SA, Marcy-l'Étoile.
- Coleman, D. C., Moran, G. P., Mcmanus, B. A., and Sullivan, D. J. (2010). Mechanisms of antifungal drug resistance in *Candida dubliniensis*. *Future Microbiol.* 5, 935–949. doi: 10.2217/fmb.10.51
- Delarze, E., and Sanglard, D. (2015). Defining the frontiers between antifungal resistance, tolerance and the concept of persistence. *Drug Resist. Updat.* 23, 12–19. doi: 10.1016/j.drup.2015.10.001
- Espinel-Ingroff, A., Turnidge, J., Alastruey-Izquierdo, A., Botterel, F., Canton, E., Castro, C., et al. (2019). Method-dependent epidemiological cutoff values for detection of triazole resistance in *Candida* and *Aspergillus* species for the Sensititre YeastOne colorimetric broth and Etest agar diffusion methods. *Antimicrob. Agents Chemother.* 63:e001651-18.
- EUCAST (2019). *Subcommittee on Antifungal Susceptibility Testing (Afst) of the Escmid European Committee for Antimicrobial Susceptibility Testing*. Available online at: <http://www.eucast.org/astoffungi/clinicalbreakpointsforantifungals/> (accessed July 16, 2019).
- Jacobsen, M. D., Whyte, J. A., and Odds, F. C. (2007). *Candida albicans* and *Candida dubliniensis* respond differently to echinocandin antifungal agents *in vitro*. *Antimicrob. Agents Chemother.* 51, 1882–1884. doi: 10.1128/aac.01525-06
- Loreto, E. S., Scheid, L. A., Nogueira, C. W., Zeni, G., Santurio, J. M., and Alves, S. H. (2010). *Candida dubliniensis*: epidemiology and phenotypic methods for identification. *Mycopathologia* 169, 431–443. doi: 10.1007/s11046-010-9286-5
- Lortholary, O., Dannaoui, E., Raoux, D., Hoinard, D., Datry, A., Paugam, A., et al. (2007). *In vitro* susceptibility to posaconazole of 1,903 yeast isolates recovered in France from 2003 to 2006 and tested by the method of the European Committee on Antimicrobial Susceptibility Testing. *Antimicrob. Agents Chemother.* 51, 3378–3380. doi: 10.1128/aac.00496-07
- Marcos-Zambrano, L. J., Escibano, P., Sanchez-Carrillo, C., Bouza, E., and Guinea, J. (2016). Scope and frequency of fluconazole trailing assessed using EUCAST in invasive *Candida* spp. isolates. *Med. Mycol.* 54, 733–739. doi: 10.1093/mmy/myw033
- Moran, G. P., Coleman, D. C., and Sullivan, D. J. (2012). *Candida albicans* versus *Candida dubliniensis*: why is *C. albicans* more pathogenic?. *Int. J. Microbiol.* 2012:205921.
- Perea, S., Lopez-Ribot, J. L., Wickes, B. L., Kirkpatrick, W. R., Dib, O. P., Bachmann, S. P., et al. (2002). Molecular mechanisms of fluconazole resistance in *Candida dubliniensis* isolates from human immunodeficiency virus-infected patients with oropharyngeal candidiasis. *Antimicrob. Agents Chemother.* 46, 1695–1703. doi: 10.1128/aac.46.6.1695-1703.2002
- Pfaller, M. A., Andes, D. R., Diekema, D. J., Horn, D. L., Reboli, A. C., Rotstein, C., et al. (2014a). Epidemiology and outcomes of invasive candidiasis due to non-albicans species of *Candida* in 2,496 patients: data from the Prospective

- Antifungal Therapy (PATH) registry 2004–2008. *PLoS One* 9:e101510. doi: 10.1371/journal.pone.0101510
- Pfaller, M. A., Espinel-Ingroff, A., Bustamante, B., Canton, E., Diekema, D. J., Fothergill, A., et al. (2014b). Multicenter study of anidulafungin and micafungin MIC distributions and epidemiological cutoff values for eight *Candida* species and the CLSI M27-A3 broth microdilution method. *Antimicrob. Agents Chemother.* 58, 916–922. doi: 10.1128/aac.02020-13
- Pfaller, M. A., Messer, S. A., Gee, S., Joly, S., Pujol, C., Sullivan, D. J., et al. (1999). In vitro susceptibilities of *Candida dubliniensis* isolates tested against the new triazole and echinocandin antifungal agents. *J. Clin. Microbiol.* 37, 870–872. doi: 10.1128/jcm.37.3.870-872.1999
- Prigent, G., Ait-Ammar, N., Levesque, E., Fekkar, A., Costa, J. M., El Anbassi, S., et al. (2017). Echinocandin resistance in *Candida* species isolates from liver transplant recipients. *Antimicrob. Agents Chemother.* 61:e001229-16.
- Roberts, A. L., Alelew, A., and Iwen, P. C. (2016). Evaluation of matrix-assisted laser desorption ionization-time-of-flight mass spectrometry to differentiate between *Candida albicans* and *Candida dubliniensis*. *Diagn. Microbiol. Infect. Dis.* 85, 73–76. doi: 10.1016/j.diagmicrobio.2016.01.017
- Rosenberg, A., Ene, I. V., Bibi, M., Zakin, S., Segal, E. S., Ziv, N., et al. (2018). Antifungal tolerance is a subpopulation effect distinct from resistance and is associated with persistent candidemia. *Nat. Commun.* 9:2470.
- Rueda, C., Puig-Asensio, M., Guinea, J., Almirante, B., Cuenca-Estrella, M., Zaragoza, O., et al. (2017). Evaluation of the possible influence of trailing and paradoxical effects on the clinical outcome of patients with candidemia. *Clin. Microbiol. Infect.* 23, e41–e49.
- Strati, F., Di Paola, M., Stefanini, I., Albanese, D., Rizzetto, L., Lionetti, P., et al. (2016). Age and gender affect the composition of fungal population of the human gastrointestinal tract. *Front. Microbiol.* 7:1227. doi: 10.3389/fmicb.2016.01227
- Sullivan, D. J., Moran, G. P., and Coleman, D. C. (2005). *Candida dubliniensis*: ten years on. *FEMS Microbiol. Lett.* 253, 9–17. doi: 10.1016/j.femsle.2005.09.015

**Disclosure:** Outside the present work the authors have the following disclosures: During the past 5 years, ED has received research grants from MSD and Gilead; travel grants from Gilead, MSD, Pfizer, and Astellas, and speaker's fee from Gilead, MSD, and Astellas. M-EB has received research grants from MSD and Astellas; travel grants from Gilead, MSD, and Astellas, and speaker's fee from Gilead, MSD, and Astellas.

**Conflict of Interest:** The authors declare that the research was conducted in the absence of any commercial or financial relationships that could be construed as a potential conflict of interest.

Copyright © 2020 Ayadi, Sitterlé, d'Enfert, Dannaoui and Bougnoux. This is an open-access article distributed under the terms of the Creative Commons Attribution License (CC BY). The use, distribution or reproduction in other forums is permitted, provided the original author(s) and the copyright owner(s) are credited and that the original publication in this journal is cited, in accordance with accepted academic practice. No use, distribution or reproduction is permitted which does not comply with these terms.