



**HAL**  
open science

## Prevalence and prognostic value of autonomic neuropathy assessed by Sudoscan® in transthyretin wild-type cardiac amyloidosis

Mounira Kharoubi, Frédéric Roche, Mélanie Bézard, David Hupin, Sidney Silva, Silvia Oghina, Coraline Chalard, Amira Zaroui, Arnault Galat, Soulef Guendouz, et al.

### ► To cite this version:

Mounira Kharoubi, Frédéric Roche, Mélanie Bézard, David Hupin, Sidney Silva, et al.. Prevalence and prognostic value of autonomic neuropathy assessed by Sudoscan® in transthyretin wild-type cardiac amyloidosis. ESC Heart Failure, 2020, 8 (2), pp.1656 - 1665. 10.1002/ehf2.13131 . hal-04154596

**HAL Id: hal-04154596**

**<https://hal.u-pec.fr/hal-04154596>**

Submitted on 6 Jul 2023

**HAL** is a multi-disciplinary open access archive for the deposit and dissemination of scientific research documents, whether they are published or not. The documents may come from teaching and research institutions in France or abroad, or from public or private research centers.

L'archive ouverte pluridisciplinaire **HAL**, est destinée au dépôt et à la diffusion de documents scientifiques de niveau recherche, publiés ou non, émanant des établissements d'enseignement et de recherche français ou étrangers, des laboratoires publics ou privés.

# Prevalence and prognostic value of autonomic neuropathy assessed by Sudoscan® in transthyretin wild-type cardiac amyloidosis

Mounira Kharoubi<sup>1,2,3,4,\*†</sup>, Frédéric Roche<sup>5,6†</sup>, Mélanie Bézard<sup>1,2,3,4</sup>, David Hupin<sup>5,6†</sup>, Sidney Silva<sup>1,2,3,4</sup>, Silvia Oghina<sup>1,2,3,4</sup>, Coraline Chalard<sup>1,2,3,4</sup>, Amira Zaroui<sup>1,2,7</sup>, Arnault Galat<sup>1,2,3,4</sup>, Soulef Guendouz<sup>1,2,3,4</sup>, Florence Canoui-Poitrine<sup>8</sup>, Luc Hittinger<sup>1,2,3,4</sup>, Emmanuel Teiger<sup>1,2,3,4</sup>, Jean-Pascal Lefaucheur<sup>9,10†</sup> and Thibaud Damy<sup>1,2,3,4,11†</sup>

<sup>1</sup>Cardiology Department, AP-HP (Assistance Publique-Hôpitaux de Paris), Henri Mondor University Hospital, 51 Avenue du Marechal de Lattre de Tassigny, Créteil, F-94010, France; <sup>2</sup>French Referral Centre for Cardiac Amyloidosis, Cardiogen Network, Créteil, France; <sup>3</sup>GRC Amyloid Research Institute, Créteil, France; <sup>4</sup>DHU-ATVB, Créteil, France; <sup>5</sup>CHU Saint Etienne, Clinical Physiology and Exercise Department, VISAS Centre, Saint-Etienne, France; <sup>6</sup>University Jean Monnet, EA 4607, SNA EPIS, Saint-Etienne, France; <sup>7</sup>Cardiology Department, CHU la Rabta, Jebbari Tunis, Tunisia; <sup>8</sup>Public Health Department, AP-HP (Assistance Publique-Hôpitaux de Paris), Henri Mondor University Hospital, Créteil, France; <sup>9</sup>Université Paris-Est Créteil, EA 4391, ENT, Créteil, France; <sup>10</sup>Clinical Neurophysiology Unit, AP-HP (Assistance Publique-Hôpitaux de Paris), Henri Mondor University Hospital, Créteil, France; <sup>11</sup>Clinical Investigation Center, Inserm 1430, Henri Mondor University Hospital, Créteil, France

## Abstract

**Aims** The prevalence of autonomic neuropathy (AN) is high in patients with hereditary transthyretin amyloidosis but remains unknown in transthyretin wild-type cardiac amyloidosis (ATTRwt-CA). This study aimed to determine the prevalence of AN in patients with ATTRwt-CA using Sudoscan®, a non-invasive method used to provide evidence of AN in clinical practice and based on measurement of electrochemical skin conductance at the hands and feet (fESC).

**Methods and results** A series of 62 non-diabetic patients with ATTRwt-CA was prospectively included over 2 years and compared with healthy elderly subjects, matched by age, gender, and body mass index. The presence of AN was defined as electrochemical skin conductance at the hands <60 µS and/or fESC <70 µS, and conductances were analysed according to clinical, biological, and echocardiographic data. Mean fESC was significantly lower in patients with ATTRwt-CA compared with elderly controls: 68.3 (64.1–72.5) vs. 76.9 (75.6–78.1) µS ( $P < 0.0001$ ), respectively. Prevalence of fESC <70 µS was higher in ATTRwt-CA patients than in controls: 48.4% vs. 19.9%,  $P < 0.05$ . Univariate analysis showed that fESC, N-terminal pro-B-type natriuretic peptide, creatinine plasma levels, and echocardiographic global longitudinal strain were associated with decompensated cardiac failure and death. Multivariate analysis revealed that fESC was an independent prognostic factor, and Kaplan–Meier estimator evidenced a greater occurrence of cardiac decompensation and death in patients with fESC <70 µS,  $P = 0.046$ .

**Conclusions** Reduced fESC was observed in almost 50% of patients with ATTRwt-CA and was associated with a worse prognosis. Sudoscan® could easily be used to screen ATTRwt-CA patients for the presence of AN and identify patients at higher risk for a poor outcome.

**Keywords** Aging; Cardiac amyloidosis; Heart failure; Neuropathy; Prognosis; Sudoscan

Received: 21 June 2020; Revised: 18 October 2020; Accepted: 15 November 2020

\*Correspondence to: Mounira Kharoubi, Cardiology Department, AP-HP (Assistance Publique-Hôpitaux de Paris), Henri Mondor University Hospital, 51 Avenue du Marechal de Lattre de Tassigny, F-94010 Créteil, France. Tel: +33(0)1.49.81.22.53; Fax: +33(0)1.49.81.22.53. Email: mounira.kharoubi@aphp.fr

†These authors have the same contribution to the study.

## Introduction

Transthyretin amyloidosis (ATTR) is a severe, progressive, and fatal systemic disease, characterized by an accumulation of

insoluble fibril proteins in the extracellular matrix of various organs including the heart and peripheral nerves.<sup>1,2</sup> There are two main types of ATTR: a hereditary or mutated variant (ATTRv) and a wild-type (ATTRwt-CA), also named senile

systemic amyloidosis, age-related amyloidosis, or senile cardiac amyloidosis. ATTRwt-CA predominantly affects the heart with a very strong predominance for patients over 60 years of age.<sup>2,3</sup> The ATTRwt-CA clinical phenotype includes concentric left ventricular hypertrophy, preserved left ventricular ejection fraction,<sup>2,3,4</sup> and normal or low QRS voltages on electrocardiogram.<sup>3,4</sup> Patients affected by ATTRwt-CA can suffer from heart failure, arrhythmias, and other common, cardiac manifestations.<sup>3,4</sup> Although ATTRwt-CA mainly involves the heart, focal neurological manifestations have been reported, including carpal tunnel syndrome or lumbar spinal canal stenosis.<sup>3,4</sup> However, the occurrence of more diffuse involvement of peripheral nerves in the context of ATTRwt-CA is not known.

Among the different types of nerve fibres, amyloid disorders preferentially affect fibres of small diameter, that is, thinly myelinated A $\delta$  fibres and unmyelinated C fibres, which convey either thermalgesic sensory or autonomic information. This leads to a diffuse, symmetrical, length-dependent small fibre neuropathy, involving in particular the unmyelinated C fibres of the autonomic nervous system. There are several methods to assess autonomic fibres, including cardiovascular and sudomotor tests.<sup>5</sup> Most of these methods are time-consuming and require highly specialized and expensive equipment. Conversely, the Sudoscan<sup>®</sup> device allows rapid and objective evaluation of sweat gland innervation at the extremities by measuring electrochemical skin conductance (ESC)<sup>6,7</sup> according to a chronoamperometric method. Briefly, a direct current of low voltage (<4 V) is incrementally applied to the skin through a pair of electrodes; the skin then generates a current whose intensity (around 0.2 mA) is proportional to the density of chloride ions drawn from the sweat glands (reverse iontophoresis). The ratio between the current generated by the reaction of the chloride ions with the electrodes and the voltage of the direct current delivered by the electrodes (Ohm's law) is defined as the ESC and measured in microSiemens ( $\mu$ S). The ESC represents the ease with which the electric current passes through an axonal reflex involving autonomic C fibres and depends on the production of chloride ions by sweat glands. Therefore, a reduced ESC principally reflects a reduced innervation of the sweat glands by unmyelinated C fibres. For this reason, ESC assessment is now considered a useful method for the diagnosis of autonomic neuropathy (AN) in clinical practice, as evidenced by its use in AN of various origins, including diabetes<sup>6-8</sup> and ATTRv.<sup>9-11</sup> In particular, a correlation has been found between ESC measures and the severity of ATTRv,<sup>10</sup> and it has been suggested that a decrease in ESC could be an early marker of the disease.<sup>12</sup> Little is known about the occurrence and clinical consequences of AN in ATTRwt-CA. Therefore, the aim of this study was to evaluate the presence of AN in patients with ATTRwt-CA through ESC measurement.

## Methods

### Study populations

Patients with ATTRwt-CA were compared with a control group of healthy elderly subjects. Between 2018 and 2019, we screened 74 patients with confirmed ATTRwt-CA, referred for hospitalization or consultation to the French referral centre for Cardiac Amyloidosis at the Henri Mondor University Hospital, Créteil, France. Among these 74 ATTRwt-CA patients, 12 patients with diabetes (treated with oral drugs or insulin) were excluded from the study to avoid potential bias due to the presence of diabetic peripheral neuropathy. The remaining 62 patients were included in the study. Data were recorded electronically according to the French CNIL (Commission Nationale de l'Informatique et des Libertés), and written informed consent for participation in the Amyloidosis Network registry was obtained from each patient. The study was approved by the local ethics committee (authorization number 1431858).

Healthy elderly subjects serving as controls were issued from the PROgnostic indicator OF cardiovascular and cerebrovascular events (PROOF) study, which was a prospective longitudinal cohort study recruiting inhabitants of the city of Saint Etienne, France, who were over 65 years of age. Subjects with prior cardiac events such as myocardial infarction and congestive heart disease, diabetes, dependent people or people living in institutions, were excluded from this study. All subjects signed an informed consent form before being included in the PROOF study, which was approved by the local ethics committee (CCPRB Rhône-Alpes Loire).

### Diagnosis of wild-type cardiac amyloidosis

Transthyretin amyloidosis diagnosis was based on TTR typical Congo red staining, and positive staining with TTR antibodies on endomyocardial or extra-myocardial biopsy,<sup>13</sup> and/or on bisphosphonate scintigraphy. Genetic sequencing of ATTR was performed to differentiate ATTRwt-CA from ATTRv. A diagnosis of cardiac amyloidosis was considered in patients with amyloidosis when there was an increase in wall thickness (>12 mm) measured at echocardiography in the absence of another known cause of cardiac hypertrophy and increased plasma levels of N-terminal pro-B-type natriuretic peptide (NT-proBNP) above 332 ng/L (in the absence of renal failure or atrial fibrillation). The severity of cardiac amyloidosis was assessed using two biological markers, that is, plasma levels of high-sensitivity troponin T and NT-proBNP.

## Data collection

Data collected for ATTRwt-CA patients included demographic information (age and gender), body mass index (BMI), cardiovascular risk factors (diabetes, dyslipidaemia, or high blood pressure), average heart rate, average systolic and diastolic blood pressures, New York Heart Association functional classification of heart failure, and presence of cardiac arrhythmia, pacemaker, or implantable cardioverter–defibrillator. All patients also had an evaluation of cardiac and renal biomarkers (plasma levels of high-sensitivity troponin T, NT-proBNP, and creatinine), an electrocardiogram, a transthoracic echocardiography (with measurement of left ventricular ejection fraction, interventricular septal thickness, and global longitudinal strain), and cardiac magnetic resonance imaging. Extra-cardiac amyloid symptoms were sought for all patients by a senior specialist in amyloidosis. Neurological involvement was also investigated, including the presence of symptoms, signs, or medical history of diffuse neuropathy (e.g. paresthesia and urinary bladder disturbances), carpal tunnel syndrome, nerve root lesion (spinal stenosis), severe hypoacusis or deafness, or dysautonomia (e.g. orthostatic hypotension or gastrointestinal symptoms, such as vomiting and diarrhoea). Finally, the presence of Dupuytren's contracture was recorded.

For the healthy elderly controls, only age, gender, and BMI were recorded. As mentioned earlier, subjects with history of cardiac events or diabetes were excluded.

## Electrochemical skin conductance

In all ATTRwt-CA patients and healthy elderly controls, ESC was measured at the hands (hESC) and feet (fESC) using Sudoscan® (Impeto Medical, Paris, France). During a 3 min scan, subjects were asked to stand and place the palms and soles on large stainless-steel electrodes. Then hESC and fESC were recorded bilaterally and compared with normal values published in the literature, with a lower limit of normal of 60  $\mu\text{S}$  for hESC and 70  $\mu\text{S}$  for fESC.<sup>14</sup>

## Statistical analysis

Statistical tests were performed using SAS software (Statistical Analysis System 9.4 Institute Inc., Cary, NC, USA). Quantitative continuous variables were expressed as mean (95% confidential interval) and qualitative categorical variables as percentages. Comparisons were made using Student's *t*-test for quantitative values and  $\chi^2$  test for qualitative values. Pearson's correlation was used to study right/left correlations of ESC values. A survival analysis was performed using Kaplan–Meier method and the log-rank test. In univariate and multivariate analyses, the Cox proportional risk

regression model (backward selection) was used to evaluate the independent risk factors for cardiac decompensation and for death. All statistical tests were two-sided, and a *P*-value < 0.05 was considered significant.

## Results

### Characteristics of the populations

In our cohort of 62 patients with ATTRwt-CA (*Table 1*), there were mainly men ( $n = 58$ , 93.5%), with a mean age of 78.6 years (76.7–80.6) and a mean BMI of 25.3  $\text{kg}/\text{m}^2$  (24.4–26.2). In this population, 30.7% of patients had symptoms compatible with peripheral neuropathy (mostly pain, numbness, and weakness), 80.3% had symptoms or a history of carpal tunnel syndrome (unilateral or bilateral), 18.3% had symptomatic lumbar spinal stenosis, 22.6% had dysautonomic symptoms (mainly orthostatic hypotension), and 28.2% had Dupuytren's contracture. A cohort of 186 healthy elderly controls was matched by gender (94.2% of men), age [mean 74.8 years (74.6–75.0)], and BMI [mean 25.0  $\text{kg}/\text{m}^2$  (24.2–26.8)].

### Electrochemical skin conductance

The mean hESC and fESC were significantly lower in patients with ATTRwt-CA than in elderly controls (*Table 2*). In addition, the percentages of subjects with hESC <60  $\mu\text{S}$  and/or fESC <70  $\mu\text{S}$  were significantly higher in patients with ATTRwt-CA than in elderly controls: 33.9% vs. 16.7% for hESC and 48.4% vs. 19.9% for fESC, respectively ( $P < 0.05$ ) (*Figure 1*). In patients with ATTRwt-CA compared with healthy elderly controls, reduced hESC and fESC (<60  $\mu\text{S}$  and <70  $\mu\text{S}$ , respectively) were more frequently observed either concomitantly (24.2% vs. 8.1%,  $P < 0.0001$ ) or independently (only reduced hESC: 9.7% vs. 8.6%,  $P < 0.0001$ ; only reduced fESC: 24.2% vs. 11.8%,  $P < 0.0001$ ). In the subgroup of controls or patients with hESC <60  $\mu\text{S}$  or fESC <70  $\mu\text{S}$ , mean values were also significantly lower in patients with ATTRwt-CA than in controls (*Table 2*).

In both healthy elderly controls and patients with ATTRwt-CA, right and left ESC values were symmetrical and highly correlated (*Figure 2*). A similar correlation between right and left hESC or fESC values was observed regardless of the presence of carpal tunnel syndrome, symptomatic neuropathy (including paresthesia and urinary bladder disturbances), or lumbar spinal stenosis (*Figure 3*). No significant difference was observed in hESC in ATTRwt-CA patients whether symptoms or history of carpal tunnel syndrome was present ( $n = 54$ ) or absent ( $n = 8$ ) [mean (95% confidence interval): 61.0  $\mu\text{S}$  (55.8–66.2) vs. 62.4  $\mu\text{S}$  (51.3–73.4),  $P = 0.81$ ].

**Table 1** Clinical characteristics of patients with transthyretin wild-type cardiac amyloidosis

<i>N</i>	ATTRwt-CA 62
Clinical characteristics	
Age, years	78.6 (76.7; 80.6)
Male, <i>n</i> (%)	58 (93.6)
BMI, kg/m <sup>2</sup>	25.3 (24.4; 26.2)
CV characteristics	
NYHA class III–IV vs. I–II, <i>n</i> (%)	20 (32.3)
Heart rate, b.p.m.	77.1 (73.9; 80.3)
Systolic blood pressure, mmHg	130.6 (126.5; 134.7)
Diastolic blood pressure, mmHg	75.7 (73.3; 78.2)
Atrial fibrillation, <i>n</i> (%)	8 (14.0)
Pacemaker, <i>n</i> (%)	29 (46.8)
ICD, <i>n</i> (%)	11 (17.7)
CV risk factors	
Dyslipidaemia, <i>n</i> (%)	28 (45.2)
Hypertension, <i>n</i> (%)	38 (61.3)
History and reported symptoms	
Carpal tunnel surgery or symptoms, <i>n</i> (%)	49 (80.3)
Bilateral carpal tunnel	38 (61.3)
Left carpal tunnel alone	4 (6.5)
Right carpal tunnel alone	4 (6.5)
Carpal tunnel surgery (alone, bilateral, or right or left), <i>n</i> (%)	35 (57.4)
Lumbar spinal stenosis surgery, <i>n</i> (%)	11 (18.3)
Dupuytren's syndrome, <i>n</i> (%)	11 (28.2)
Deafness, <i>n</i> (%)	41 (66.1)
Symptomatic neuropathy, <i>n</i> (%)	19 (30.7)
Symptomatic dysautonomia (orthostatic hypotension), <i>n</i> (%)	14 (22.6)
Symptomatic gastrointestinal dysautonomia, <i>n</i> (%)	16 (25.8)
Biological variables	
NT-proBNP, pg/mL	4528 (3463; 5594)
NT-proBNP and eGFR staging <sup>a</sup> , <i>n</i> (%)	
Stage 1	23 (37.1)
Stage 2	30 (48.4)
Stage 3	9 (14.5)
hs-TnT, ng/mL	85.0 (55.6; 114.3)
Haemoglobin, g/dL	13.5 (12.6; 14.5)
Creatinine, μmol/L	121.4 (109.7; 133.1)
eGFR, mL/min/1.73 m <sup>2</sup>	59.8 (54.2; 65.3)
Echocardiography characteristics	
LVEF, %	46.8 (43.7; 50.0)
IVST, mm	18.6 (17.7; 19.5)
GLS, %	9.1 (8.2; 10.0)

ATTRwt-CA, transthyretin wild-type cardiac amyloidosis; BMI, body mass index; CV, cardiovascular; eGFR, estimated glomerular filtration rate; GLS, global longitudinal strain; hs-TnT, high-sensitivity troponin T; ICD, implantable cardioverter–defibrillator; IVST, interventricular septum thickness; LVEF, left ventricular ejection fraction; NT-proBNP, N-terminal pro-B-type natriuretic peptide; NYHA, New York Heart Association.

Values are mean (95% confidence interval) except for NT-proBNP and hs-TnT (median and interquartile range).

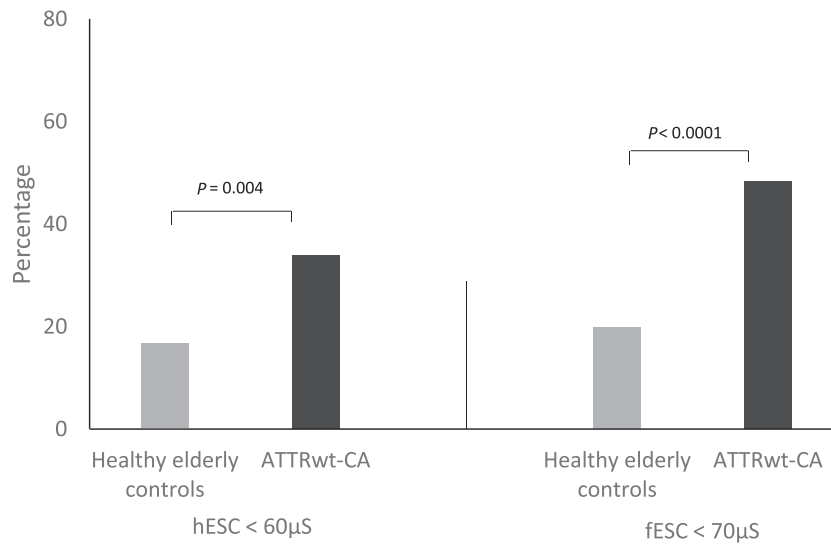
<sup>a</sup>Following Gillmore, Damy, et al. *EJH* 2017,<sup>35</sup> Stage 1 was defined as NT-proBNP ≤3000 ng/L and eGFR ≥45 mL/min, Stage 3 was defined as NT-proBNP >3000 ng/L and eGFR <45 mL/min, and the remainder were Stage 2.

**Table 2** Feet and hands electrochemical skin conductance (fESC and hESC) values in elderly healthy controls (matched by age, gender, and body mass index) and patients with transthyretin wild-type cardiac amyloidosis

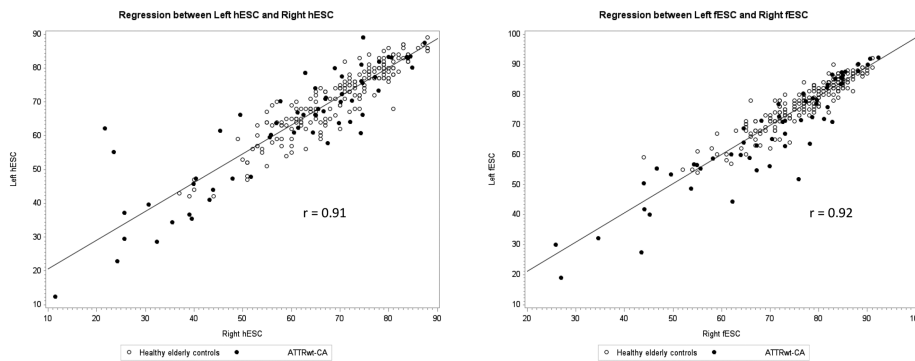
Variables	Elderly healthy control		ATTRwt-CA		<i>P</i> -value
	<i>N</i>		<i>N</i>		
Mean fESC in all (μS)	186	76.9 (75.6–78.1)	62	68.3 (64.1–72.5)	<0.0001
Mean hESC in all (μS)	186	70.0 (68.5–71.5)	62	61.5 (57.0–66.0)	0.0006
Mean fESC in <70 μS group (μS)	37	64.3 (62.6–66.0)	30	54.5 (49.9–59.1)	0.0002
Mean hESC in <60 μS group (μS)	31	53.5 (51.3–55.7)	17	40.4 (35.1–45.8)	<0.0001

ATTRwt-CA, transthyretin wild-type cardiac amyloidosis.

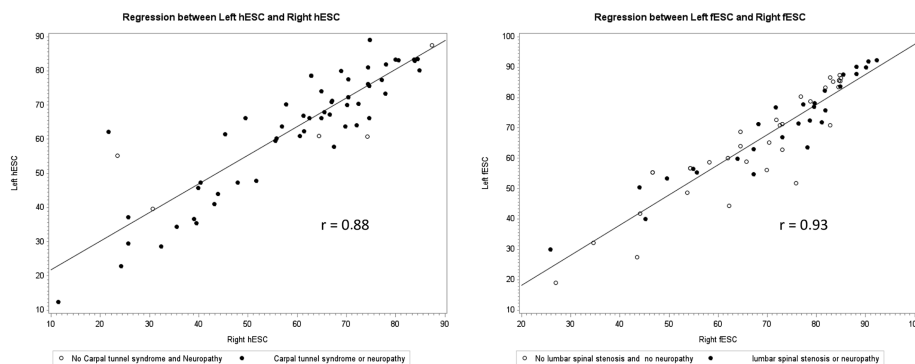
**Figure 1** Percentage of healthy elderly controls and transthyretin wild-type cardiac amyloidosis (ATTRwt-CA) patients with reduced electrochemical skin conductance at the hands (hESC) (<60 μS) or feet (fESC) (<70 μS).



**Figure 2** Correlation between right and left electrochemical skin conductance at the hands (hESC) or feet (fESC) in healthy elderly controls and transthyretin wild-type cardiac amyloidosis (ATTRwt-CA) patients.



**Figure 3** Correlation between right and left electrochemical skin conductance at the hands (hESC) or feet (fESC) in transthyretin wild-type cardiac amyloidosis (ATTRwt-CA) patients with or without carpal tunnel syndrome, diffuse neuropathy, or lumbar spinal stenosis.



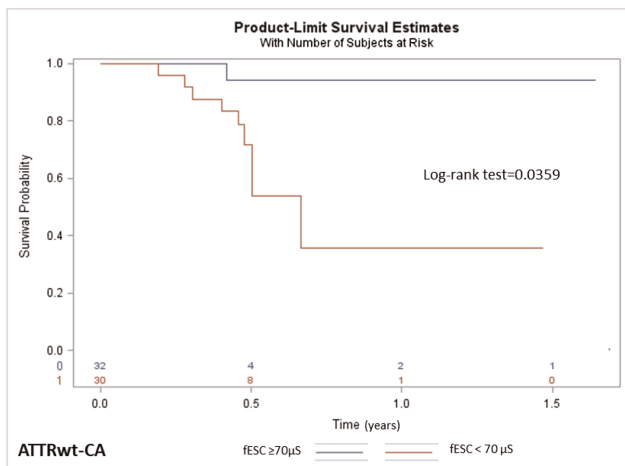
### Relationship between electrochemical skin conductance and functional cardiac status and prognosis

In the 62 patients with ATTRwt-CA, a survival analysis using Kaplan–Meier method showed a larger occurrence of cardiac decompensation and death in patients with fESC <70 μS (Figure 4). Univariate analysis indicated that the hESC, fESC, plasma NT-proBNP and creatinine levels, and echocardiographic global longitudinal strain were associated with cardiac decompensation and death (Table 3). In the multivariate Cox model analysis (Model 2), including demography, ESC, and biological markers, age, fESC, and NT-pro-BNP plasma level were identified as independent prognostic factors (Table 3). Patients with fESC <70 μS showed worse cardiac status with higher NT-pro-BNP levels than those with fESC ≥70 μS (P = 0.0204). The value of estimated glomerular filtration rate was also significantly lower in patients with fESC <70 μS (P = 0.0014), although age was similar compared with patients with fESC ≥70 μS (Table 4).

### Discussion

To our knowledge, this study is the first to objectively assess the presence of AN in a cohort of patients with ATTRwt-CA. The main results of this study are as follows: (i) hESC and fESC values are significantly reduced in ATTRwt-CA patients compared with age-matched, sex-matched, and BMI-matched healthy elderly controls, with ATTRwt-CA patients also demonstrating a higher rate of abnormal hESC and fESC measures (<60 and <70 μS, respectively); and (ii) abnormally reduced fESC was associated with poorer functional cardiac status

**Figure 4** Kaplan–Meier curves for cardiac decompensation or death in transthyretin wild-type cardiac amyloidosis (ATTRwt-CA) patients with electrochemical skin conductance at the feet (fESC) ≥70 μS or <70 μS.



**Table 3** Univariate and multivariate model analyses for associations between mortality or cardiac decompensation and selected variables in transthyretin wild-type cardiac amyloidosis

Class	Variables	Univariate model		Multivariate Model 1 Demography + ESC		Multivariate Model 2 Model 1 + biology		Multivariate Model 3 Model 2 + echocardiography	
		P-value	HR (95% CI)	P-value	HR (95% CI)	P-value	HR (95% CI)	P-value	HR (95% CI)
Demography	Age, years	0.799	1.01 (0.92–1.11)	0.301	0.95 (0.86–1.05)	0.07	0.91 (0.83–1.01)	0.108	0.92 (0.84–1.01)
Clinical history	NYHA, class	0.979	0.98 (0.25–3.82)	0.607	1.48 (0.34–6.50)	0.276	2.61 (0.46–14.66)		
ESC (Sudocan)	fESC, μS	<b>0.006</b>	0.94 (0.90–0.98)	<b>0.005</b>	0.93 (0.88–0.98)	<b>0.046</b>	0.94 (0.89–0.99)	0.09	0.95 (0.89–1.01)
	hESC, μS	<b>0.037</b>	0.97 (0.94–1.00)						
Biology	NT-proBNP, pg/mL	<b>0.015</b>	1.02 (1.01–1.03)			<b>0.026</b>	1.03 (1.02–1.05)	0.059	1.00 (1.00–1.00)
	hs-TnT, ng/mL	0.549	1.00 (0.99–1.01)						
	Creatinine, μmol/L	<b>0.023</b>	1.01 (1.00–1.03)						
Echocardiography	GLS, %	<b>0.079</b>	0.80 (0.61–1.03)					0.377	0.88 (0.67–1.16)

CI, confidence interval; ESC, electrochemical skin conductance; fESC, electrochemical skin conductance at the feet; GLS, global longitudinal strain; hESC, electrochemical skin conductance at the hands; HR, hazard ratio; hs-TnT, high-sensitivity troponin T; NT-proBNP, N-terminal pro-B-type natriuretic peptide; NYHA, New York Heart Association.

**Table 4** Clinical characteristics of patients with transthyretin wild-type cardiac amyloidosis according to the presence or absence of autonomic neuropathy at the feet

N	ATTRwt-CA fESC ≥70 μS	ATTRwt-CA fESC <70 μS	P-value
Clinical characteristics			
Age, years	78.3 (75.9; 80.8)	78.9 (75.7; 82.3)	0.7564
NYHA class III–IV vs. I–II, n (%)	10 (31.3)	10 (33.3)	0.5379
Heart rate, b.p.m.	78.4 (73.6; 83.2)	75.6 (71.2; 80.0)	0.3813
Systolic blood pressure, mmHg	133.4 (126.8; 139.9)	127.7 (122.8; 132.6)	0.1627
Atrial fibrillation, n (%)	3 (9.7)	5 (16.0)	0.1192
Pacemaker, n (%)	14 (43.8)	15 (50.0)	0.5470
ICD, n (%)	2 (6.3)	9 (30.0)	<b>0.0298</b>
History and reported symptoms			
Carpal tunnel surgery or symptoms, n (%)	26 (81.3)	23 (76.7)	0.4559
Lumbar spinal stenosis surgery, n (%)	6 (19.4)	5 (17.2)	0.8981
Symptomatic neuropathy, n (%)	11 (34.4)	8 (26.7)	0.3323
Biological variables			
NT-proBNP, pg/mL	3367.3 (2107.4; 4627.2)	5813.8 (4100.0; 7527.5)	<b>0.0204</b>
NT-proBNP and eGFR staging**, n (%)			<b>0.0116</b>
Stage 1	16 (50)	7 (23.3)	
Stage 2	15 (46.9)	15 (50)	
Stage 3	1 (3.1)	8 (26.7)	
hs-TnT, ng/mL	61.8 (46.5; 77.14)	109.0 (50.6; 167.5)	0.1064
eGFR, mL/min/1.73 m <sup>2</sup>	67.8 (60.3; 75.2)	50.6 (43.3; 57.9)	<b>0.0014</b>
Echocardiography characteristics			
LVEF, %	49.0 (43.9; 54.1)	44.4 (40.8; 48.0)	0.1361
IVST, mm	17.8 (16.6; 19.1)	19.4 (18.2; 20.6)	0.0669
GLS, %	9.6 (8.2; 11.1)	8.6 (7.4; 9.7)	0.2431

ATTRwt-CA, transthyretin wild-type cardiac amyloidosis; eGFR, estimated glomerular filtration rate; fESC, electrochemical skin conductance at the feet; GLS, global longitudinal strain; hs-TnT, high-sensitivity troponin T; ICD, implantable cardioverter-defibrillator; IVST, interventricular septum thickness; LVEF, left ventricular ejection fraction; NT-proBNP, N-terminal pro-B-type natriuretic peptide; NYHA, New York Heart Association.

and prognosis (higher NT-pro-BNP plasma level and higher occurrence of cardiac decompensation or death).

### Prevalence of autonomic neuropathy in transthyretin wild-type cardiac amyloidosis patients

According to hESC and fESC measurements, almost half of patients with ATTRwt-CA (48.4%) presented AN. There is no previous publication assessing the prevalence of AN in ATTRwt-CA, as evaluated using an objective and quantitative test. A few studies reported neurologic symptoms in cohorts of ATTRwt-CA patients.<sup>16,17</sup> In a cohort of 166 ATTRwt-CA patients with a mean age of 76 years, Maurer *et al.*<sup>18</sup> first showed a prevalence of 12% of neuropathic pain, 22% of numbness, and 13% of tingling, symptoms that suggest the presence of sensory neuropathy. These percentages were lower compared with patients with ATTRv and V122I mutation.<sup>19</sup> In the first Japanese nationwide cohort including 51 patients with a mean age of 72 years, Sekijima *et al.*<sup>20</sup> reported sensory disturbance at the upper and/or lower limbs in 14%, weakness in 12%, and orthostatic hypotension in 6%. In our cohort of 62 patients with a mean age of 79 years, 31% of patients reported symptoms or signs of neuropathy (mostly pain, numbness, and weakness) and 23% symptoms or signs of dysautonomia

(mainly orthostatic hypotension). Thus, the presence of sensory neuropathy is frequent in patients with ATTRwt-CA. Our study has the advantage of comparing ESC measures in patients with ATTRwt-CA with those of an elderly control population matched by age, gender, and BMI. It confirms that the prevalence of distal neuropathy, specifically involving autonomic nerve fibres, is significantly increased in the context of ATTRwt-CA. Indeed, reduced ESC values are a reliable marker of AN, although not associated with the presence of sensory symptoms in our cohort. The difference in prevalence of symptoms and abnormal ESC could be explained by the fact that ESC measurement is objective, contrary to symptoms reported by the patient. Moreover, the results observed in this study in ATTRwt-CA patients are comparable with results previously observed in patients with ATTRv. In a study of 21 patients with ATTRv, Zouari *et al.*<sup>21</sup> showed that 14% of asymptomatic patients, 86% of patients with moderate neuropathy, and 100% of patients with advanced neuropathy had altered fESC (using 67 μS as lower limit of normal). In a series of 54 patients with either ATTRv-associated polyneuropathy or chronic inflammatory demyelinating polyneuropathy, Fortanier *et al.*<sup>12</sup> showed that 90% of patients with ATTRv had altered fESC, with an optimal threshold of fESC <64 μS to differentiate ATTRv from chronic inflammatory demyelinating polyneuropathy. Finally, Montcuquet *et al.*<sup>34</sup> reported that in a series of 49 patients with



Amyloidosis light-chain (AL) amyloidosis, 74% of patients had fESC <70  $\mu$ S, while only 29% had symptoms or signs of neuropathy, and 18% had clinical dysautonomia (orthostatic hypotension). Thus, ESC measurement, particularly at the feet, can be useful to highlight a distal AN in the context of amyloidosis, whatever its type, because small autonomic nerve fibres are involved early by the amyloidotic neuropathic process. However, it must be underlined that large fibre neuropathies are the most commonly observed neuropathies in amyloidosis and particularly in hereditary ATTR.<sup>9,10</sup>

### Functional correlates and prognostic value of autonomic neuropathy in the context of cardiac amyloidosis

In the course of ATTRv, up to 75% of patients develop symptoms of AN, affecting the cardiovascular, gastrointestinal, and genitourinary systems. Amyloid AN can be very disabling with a high morbidity and mortality rate and an increased risk of sudden death.<sup>23–25</sup> The assessment of sudomotor dysfunction using ESC measurement could help in the follow-up of cardiac AN as evidenced in previous studies.<sup>26–28</sup> Our study revealed that ESC measurement, a rapid and simple test, may be of important clinical value in the context of cardiac amyloidosis by predicting a functional deterioration (cardiac decompensation) when fESC decreases. The association of AN and adverse cardiac events underlines the need to not neglect autonomic evaluation in cardiac amyloidosis, although it is usually underestimated in clinical cardiologic practice.

Early dysautonomia is a red flag in the diagnosis and therapeutic management of familial amyloid polyneuropathy associated with ATTRv<sup>29</sup>, and Sudoscan® is a first-line diagnostic test in this clinical condition. Our results suggest that the use and value of ESC measurement should be extended to ATTRwt-CA as well. In addition, ESC measurement can serve to follow the course of distal AN and its treatment, as previously shown in neuropathy associated with ATTRv,<sup>10,30</sup> chemotherapy,<sup>26,27</sup> or bariatric surgery.<sup>28</sup> The present study is the first to demonstrate an association between fESC reduction and a poor functional prognosis (cardiac decompensation and death).

### The diagnosis of autonomic neuropathy in clinical practice

The diagnosis of AN is usually based on different types of tests, such as skin biopsy and neurophysiological methods (e.g. Quantitative Sudomotor Axon Reflex Test). The diagnostic sensitivity of ESC has been shown as better than Quantitative Sudomotor Axon Reflex Test<sup>34,35</sup>; in addition, this latter technique is time-consuming and requires very specialized skills. Conversely, ESC assessment is easy and very

rapid to perform, possibly during the time of a cardiology consultation. ESC measurement is useful to complement clinical questionnaires such as the Composite Autonomic Symptom Score (COMPASS-31). Indeed, D'Amato *et al.*<sup>18</sup> showed that the sensitivity of COMPASS-31 to detect AN increased from 59% to 85% when combined with fESC. In addition, ESC measures were found to correlate with the intraepidermal density of small nerve fibres on skin biopsy.<sup>26,30,32,33</sup> Thus, ESC assessment in ATTRwt-CA patients should improve the management of these patients to prevent the deleterious impact of dysautonomia on cardiomyopathic morbidity and mortality.<sup>18</sup>

The strengths of the study are as follows: (i) this is the first study on a relatively large population of patients with ATTRwt-CA to objectively assess AN, (ii) there is a 1 year follow-up with cardiac assessment for prognostic value, and (iii) the method used to assess AN is feasible in daily cardiology practice.

The limitations of the study are as follows: (i) ESC assessment was the only neurological test for dysautonomia used in this study along. It must be underscored that the performance of the method for AN assessment has been previously explored in a large number of studies compared with reference methods and was not the aim of this study, (ii) patients did not have an examination by neurologist; however, this was not the objective of the study, which was to assess the prevalence of AN by Sudoscan®, and (iii) patients did not undergo measurement of heart rate variability measurement, a validated marker of cardiac autonomic involvement.

## Conclusions

Despite not including structured questionnaires for the assessment of dysautonomia (such as COMPASS-31) or peripheral neuropathy, this study has the merit of being the first to show that AN occurs in a large proportion of patients with ATTRwt-CA on the basis of ESC assessment, a reliable and validated test. Moreover, in this relatively large population of ATTRwt-CA patients, fESC reduction was associated with poor cardiac prognosis, highlighting the functional interest of this measure in daily cardiology practice. Sudoscan testing could be completed by the cardiologists and would allow patients with ATTRwt-CA and poor ESC to be triaged for consultation with a neurologist for further investigation, thus optimizing the management and monitoring of these patients.

## Acknowledgements

The authors thank Pr Violaine Plante Bordeneuve for his valuable advice and critical comments of the manuscript.

The authors thank Impeto Medical, France, for providing the Sudoscan device as a loan for the study, A. Moutairou for help in statistical analysis, and J.H. Calvet for critical comments of the manuscript. The authors state that their study complies with the Declaration of Helsinki, that the locally appointed ethics committee has approved the research protocol, and that informed consent has been obtained from the subjects (or their legally authorized representative).

## Conflict of interest

M.K., M.B., S.S., C.C., A.Z., A.G., S.F., F.C.P., L.H., and J.P.L. have no conflict of interest to declare for this study. T.D. has received research grant and honorarium from Pfizer, Akcea, and Novartis and honorarium from Alnylam and Prothena. F.R. has no conflict of interest to declare for this study. The PROOF study was supported by two national PHRC (1998 and 2001; DGOS, URCIP CHU Saint Etienne).

## References

- Damy T, Maurer MS, Rapezzi C, Planté-Bordeneuve V, Karalay ON, Mundayat R, Suhr OB, Kristen AV. Clinical, ECG and echocardiographic clues to the diagnosis of TTR-related cardiomyopathy. *Open Heart* 2016; **3**: e000289.
- Connors LH, Sam F, Skinner M, Salinaro F, Sun F, Ruberg FL, Berk JL, Seldin DC. Heart failure due to age-related cardiac amyloid disease associated with wild-type transthyretin: a prospective, observational cohort study. *Circulation* 2016; **133**: 282–290.
- García-Pavía P, Tomé-Esteban MT, Rapezzi C. Amyloidosis. *Also a Heart Disease Rev Esp Cardiol* 2011; **64**: 797–808.
- Gertz MA, Benson MD, Dyck PJ, Grogan M, Coelho T, Cruz M, Berk JL, Plante-Bordeneuve V, Schmidt HHJ, Merlini G. Diagnosis, prognosis, and therapy of transthyretin amyloidosis. *J Am Coll Cardiol* 2015; **66**: 2451–2466.
- Chao C-C, Huang C-M, Chiang H-H, Luo K-R, Kan H-W, Yang NC-C, Chiang H, Lin W-M, Lai S-M, Lee M-J, Shun C-T, Hsieh S-T. Sudomotor innervation in transthyretin amyloid neuropathy: pathology and functional correlates. *Ann Neurol* 2015; **78**: 272–283.
- Mayaudon H, Miloche P-O, Bauduceau B. A new simple method for assessing sudomotor function: relevance in type 2 diabetes. *Diabetes Metab* 2010; **36**: 450–454.
- Novak P. Electrochemical skin conductance: a systematic review. *Clin Auton Res* 2019; **29**: 17–29.
- Yajnik CS, Kantikar VV, Pande AJ, Deslypere JP. Quick and simple evaluation of sudomotor function for screening of diabetic neuropathy. *ISRN Endocrinol* 2012; **2012**.
- Castro J, Miranda B, Castro I, de Carvalho M, Conceição I. The diagnostic accuracy of Sudoscan in transthyretin familial amyloid polyneuropathy. *Clin Neurophysiol* 2016; **127**: 2222–2227.
- Lefaucheur J-P, Zouari HG, Gorram F, Nordine T, Damy T, Planté-Bordeneuve V. The value of electrochemical skin conductance measurement using Sudoscan® in the assessment of patients with familial amyloid polyneuropathy. *Clin Neurophysiol* 2018; **129**: 1565–1569.
- Said G, Planté-Bordeneuve V. TTR-familial amyloid polyneuropathy—neurological aspects. *Amyloid* 2012; **19**: 25–27.
- Fortanier E, Delmont E, Verschuere A, Attarian S. Quantitative sudomotor test helps differentiate transthyretin familial amyloid polyneuropathy from chronic inflammatory demyelinating polyneuropathy. *Clin Neurophysiol* 2020; **131**: 1129–1133.
- Béquignon E, Guellier A, Bartier S, Raynal M, Prulière-Escabasse V, Canouï-Poitrine F, Coste A, Damy T. How your ears can tell what is hidden in your heart: wild-type transthyretin amyloidosis as potential cause of sensorineural hearing loss in elderly-AmyloDEAFNESS pilot study. *Amyloid* 2017; **24**: 96–100.
- Vinik AI, Smith AG, Singleton JR, Callaghan B, Freedman BI, Tuomilehto J, Bordier L, Bauduceau B, Roche F. Normative values for electrochemical skin conductances and impact of ethnicity on quantitative assessment of sudomotor function. *Diabetes Technol Ther* 2016; **18**: 391–398.
- Sekijima Y, Yazaki M, Ueda M, Koike H, Yamada M, Ando Y. First nationwide survey on systemic wild-type ATTR amyloidosis in Japan. *Amyloid* 2018; **25**: 8–10.
- Maurer MS, Hanna M, Grogan M, Dispenzieri A, Witteles R, Drachman B, Judge DP, Lenihan DJ, Gottlieb SS, Shah SJ, Steidley DE, Ventura H, Murali S, Silver MA, Jacoby D, Fedson S, Hummel SL, Kristen AV, Damy T, Planté-Bordeneuve V, Coelho T, Mundayat R, Suhr OB, Waddington Cruz M, Rapezzi C. Genotype and phenotype of transthyretin cardiac amyloidosis. *J Am Coll Cardiol* 2016; **68**: 161–172.
- Zouari HG, Tin SNW, Wahab A, Damy T, Lefaucheur J-P. Assessment of autonomic innervation of the foot in familial amyloid polyneuropathy. *Eur J Neurol* 2019; **26**: 94–e10.
- D'Amato C, Greco C, Lombardo G, Frattina V, Campo M, Cefalo CMA, Izzo V, Lauro D, Spallone V. The diagnostic usefulness of the combined COMPASS 31 questionnaire and electrochemical skin conductance for diabetic cardiovascular autonomic neuropathy and diabetic polyneuropathy. *J Peripher Nerv Syst* 2020b; **25**: 44–53.
- Jin J, Wang W, Gu T, Chen W, Lu J, Bi Y, Zhu D. The application of SUDOSCAN for screening diabetic peripheral neuropathy in Chinese population. *Exp Clin Endocrinol Diabetes* 2018; **126**: 472–477.
- Wang C, Zuo A, Liu P, Zhao R, Li W, Chen L, Hou X. Electrochemical skin conductance may be used to screen for diabetic cardiac autonomic neuropathy in a Chinese population with diabetes. *J Diabetes Res* 2017: 2017. <https://doi.org/10.1155/2017/8289740>
- Castro J, Costa J, de Castro I, Conceição I. Electrochemical skin conductance in hereditary amyloidosis related to transthyretin V30M—a promising tool to assess treatment efficacy? *Amyloid* 2018; **25**: 267–268.
- Saad M, Psimaras D, Tafani C, Sallansonnet-Froment M, Calvet J-H, Vilier A, Tigaud J-M, Bompaire F, Leboutoux M, de Greslan T, Ceccaldi B, Poirier J-M, Ferrand F-R, Le Moulec S, Huillard O, Goldwasser F, Taillia H, Maisonobe T, Ricard D. Quick, non-invasive and quantitative assessment of small fiber neuropathy in patients receiving chemotherapy. *J Neurooncol* 2016; **127**: 373–380.
- Delmotte J-B, Tutakhail A, Abdallah K, Reach P, D'Ussel M, Deplanque G, Beaussier H, Coudoré F. Electrochemical skin conductance as a marker painful - oxaliplatin-induced peripheral neuropathy. *Neurol Res Int* 2018; **2018**.
- Casellini CM, Parson HK, Hodges K, Edwards JF, Lieb DC, Wohlgenuth SD, Vinik AI. Bariatric surgery restores cardiac and sudomotor autonomic C-fiber dysfunction towards normal in obese subjects with type 2 diabetes. *PLoS ONE* 2016; **11**, e0154211.
- Fabry V, Gerdelat A, Acket B, Cintas P, Rousseau V, Uro-Coste E, Errard SM, Pavy-Le Traon A. Which method for

- diagnosing small fiber neuropathy? *Front Neurol* 2020; **11**, 342.
26. Novak P. Electrochemical skin conductance correlates with skin nerve fiber density. *Front Aging Neurosci* 2016; **8**, 199.
27. Hoitsma E, Reulen JPH, de Baets M, Drent M, Spaans F, Faber CG. Small fiber neuropathy: a common and important clinical disorder. *J Neurol Sci* 2004; **227**: 119–130.
28. Sène D. Small fiber neuropathy: diagnosis, causes, and treatment. *Joint Bone Spine* 2018; **85**: 553–559.
29. Planté-Bordeneuve V, Suhr OB, Maurer MS, White B, Grogan DR, Coelho T. The Transthyretin Amyloidosis Outcomes Survey (THAOS) registry: design and methodology. *Curr Med Res Opin* 2013; **29**: 77–84.
30. Trouvin A-P, Perrot S. Functional and histological improvements of small nerve neuropathy after high-concentration capsaicin patch application: a case study. *Pain Rep* 2019; **4**, e761.
31. Zaslansky R, Yarnitsky D. Clinical applications of quantitative sensory testing (QST). *J Neurol Sci* 1998; **153**: 215–238.
32. Arunodaya GR, Taly AB. Sympathetic skin response: a decade later. *J Neurol Sci* 1995; **129**: 81–89.
33. Gutrecht JA. Sympathetic skin response. *J Clin Neurophysiol* 1994; **11**: 519–524.
34. Montcuquet A, Duchesne M, Roussellet O, Jaccard A, Magy L. Electrochemical skin conductance values suggest frequent subclinical autonomic involvement in patients with AL amyloidosis. *Amyloid*. 2020; **27**: 3:215–216. <https://doi.org/10.1080/13506129.2020.1757423>
35. Gillmore JD, Damy T, Fontana M, Hutchinson M, Lachmann HJ, Martinez-Naharro A, Quarta CC, Rezk T, Whelan CJ, Gonzalez-Lopez E, Lane T, Gilbertson JA, Rowczenio D, Petrie A, Hawkins PN. A new staging system for cardiac transthyretin amyloidosis. *European Heart Journal*. 2018; **39**: 30:2799–2806. <https://doi.org/10.1093/eurheartj/ehx589>